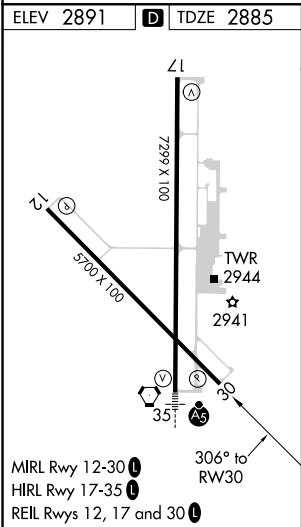
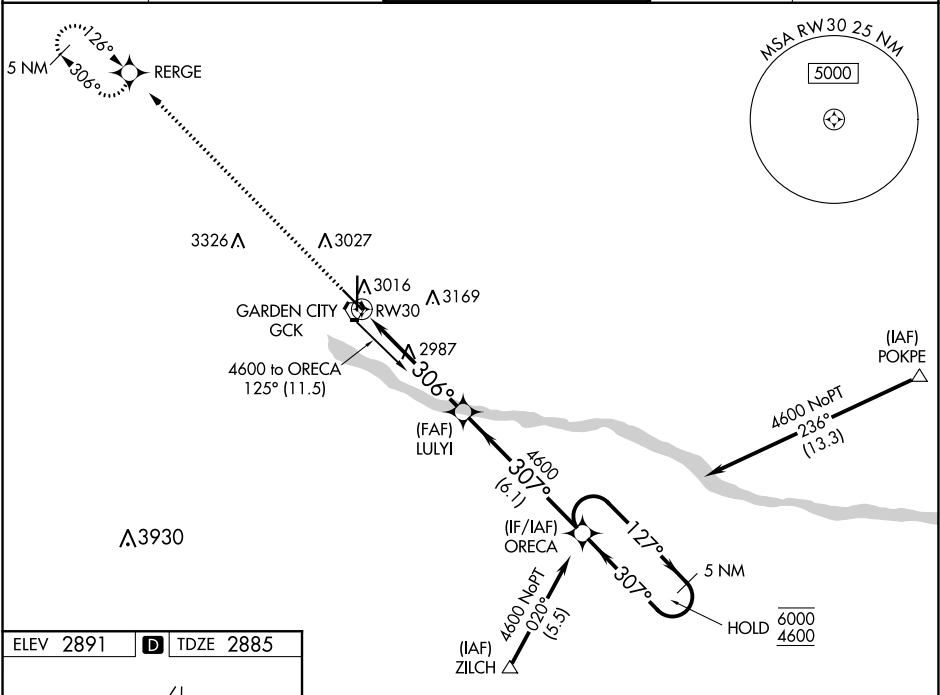


WAAS CH <b>86703</b> <b>W30A</b>	APP CRS <b>306°</b>	Rwy Idg TDZE <b>2885</b> Apt Elev <b>2891</b>
--	------------------------	---

RNAV (GPS) RWY 30  
GARDEN CITY RGNL (GCK)

RNP APCH. For uncompensated Baro-VNAV systems, LNAV/VNAV NA below -20°C or above 43°C.		MISSED APPROACH: Climb to 4500 direct RERGE and hold.		
ASOS <b>121.325</b>	KANSAS CITY CENTER <b>125.2 269.4</b>	GARDEN CITY TOWER ★ <b>118.15 (CTAF) 0 254.4</b>	GND CON <b>119.0 254.4</b>	UNICOM <b>122.95</b>



4500

↑

REGER

✦

LULYI

ORECA

5 NM Holding Pattern

\*LNAV only.

\*1.2 NM to RW30

306°

307°

127°

6000

4600

GP 3.00°

TCH 45

RW30

1.2 NM

4 NM

6.1 NM

CATEGORY	A	B	C	D
LPV DA	3135-1 250 (300-1)			
LNAV/VNAV DA	3186-1 301 (300-1)			
LNAV MDA	3300-1 415 (500-1)	3300-1¼ 415 (500-1¼)		
CIRCLING	3320-1 429 (500-1)	3360-1 469 (500-1)	3480-1½ 589 (600-1½)	3480-2 589 (600-2)

NC-2, 03 DEC 2020 to 31 DEC 2020

NC-2, 03 DEC 2020 to 31 DEC 2020