

VORTAC GCK <b><u>113.3</u></b> Chan <b>80</b>	APP CRS <b>134°</b>	Rwy Idg <b>5700</b> TDZE <b>2891</b> Apt Elev <b>2891</b>
---	------------------------	---

VOR/DME RWY 12  
GARDEN CITY RGNL (GCK)

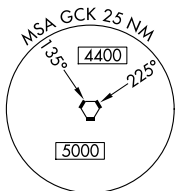
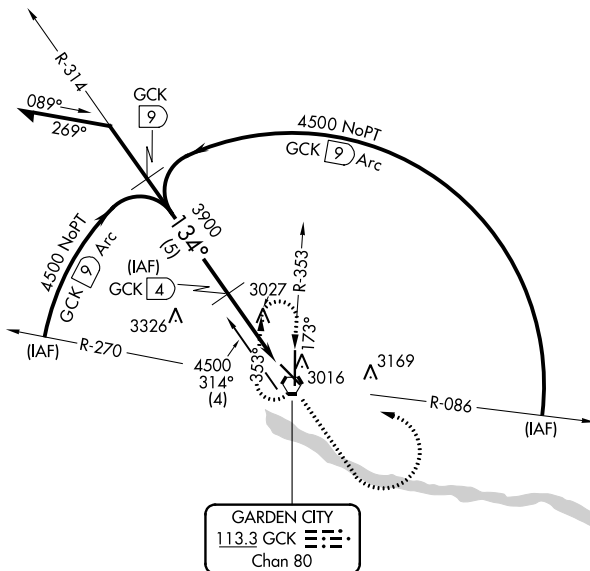
**MISSED APPROACH:** Climb to 4000 then climbing left turn to 4500 direct GCK VORTAC and hold.

ASOS  
121,325

KANSAS CITY CENTER  
125.2 269.4

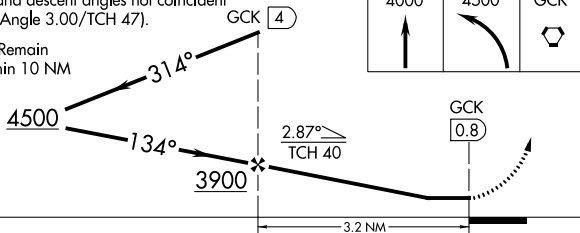
GARDEN CITY TOWER★  
118.15 (CTAF) **L** 254.4


GND CON  
**119.0 254.4**

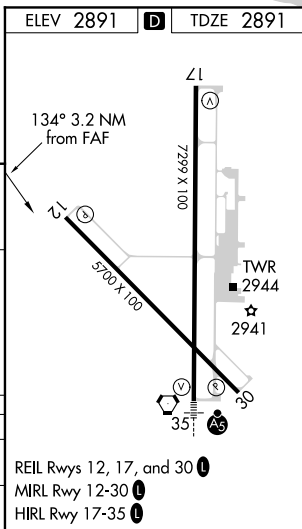
UNICOM  
122.95

VGSI and descent angles not coincident  
(VGSI Angle 3.00/TCH 47).

Remain  
within 10 NM



CATEGORY	A	B	C	D
S-12	3280-1 389 (400-1)			3280-1¼ 389 (400-1¼)
 CIRCLING	3320-1 429 (500-1)	3360-1 469 (500-1)	3480-1½ 589 (600-1½)	3480-2 589 (600-2)



GARDEN CITY, KANSAS  
Orig-C 08OCT20

37°56'N-100°43'W

GARDEN CITY RGNL (GCK)  
VOR/DME RWY 12

NC-2, 03 DEC 2020 to 31 DEC 2020

NC-2, 03 DEC 2020 to 31 DEC 2020