

WAAS
CH **50338**
W17A

APP CRS
178°

Rwy Idg
TDZE **821**
Apt Elev **825**

RNAV (GPS) RWY 17
INDEPENDENCE MUNI (IDP)

RNP APCH.

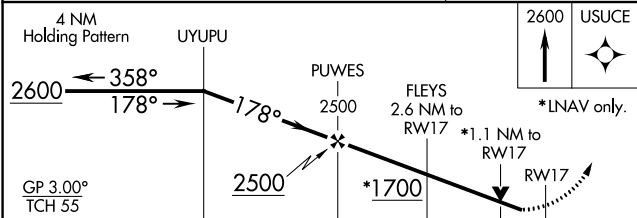
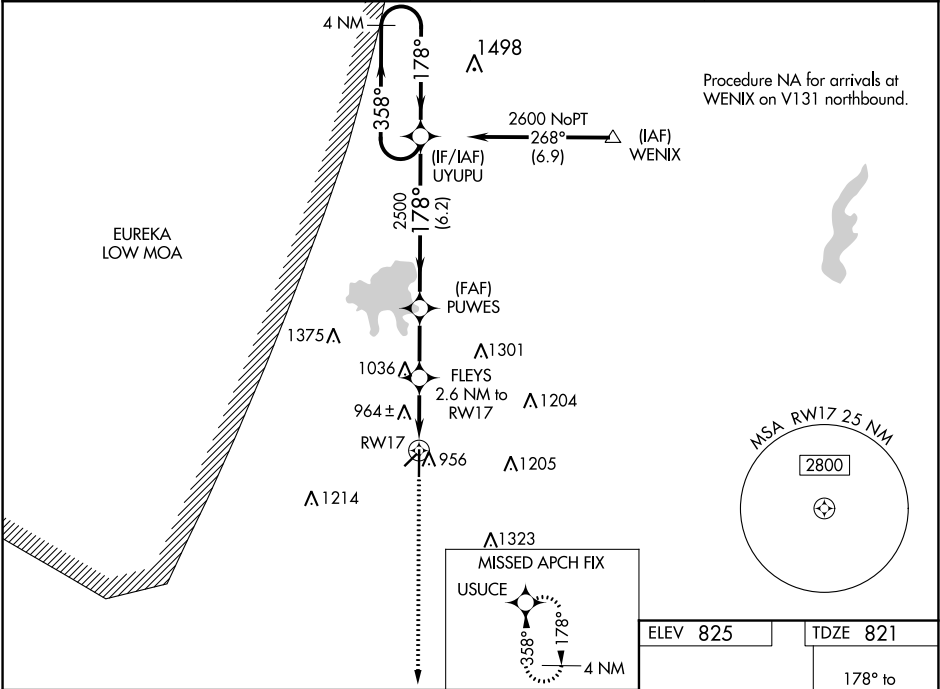
▼

▲

For uncompensated Baro-VNAV systems, LNAV/VNAV NA below -16°C (4°F) or above 54°C (130°F). Circling Rwy 4, 22 NA at night. Rwy 17 helicopter visibility reduction below ¾ SM NA.

MISSED APPROACH:
Climb to 2600 direct USUCE and hold.

AWOS-3 118.525	KANSAS CITY CENTER 132.9 279.5	CLINC DEL 121.65	UNICOM 123.05 (CTAF) 0
--------------------------	--	----------------------------	----------------------------------



CATEGORY	A	B	C	D
LPV DA	1021-¾ 200 (200-¾)			
LNAV/VNAV DA	1076-¾ 255 (300-¾)			
LNAV MDA	1220-1	399 (400-1)	1220-1½	399 (400-1½)
CIRCLING	1280-1	455 (500-1)	1340-1½ 515 (600-1½)	1680-2¾ 855 (900-2¾)

