

WAAS CH 78205 W17A	APP CRS 174°	Rwy Idg TDZE 2878 Apt Elev 2886
--	------------------------	---

RNAV (GPS) RWY 17

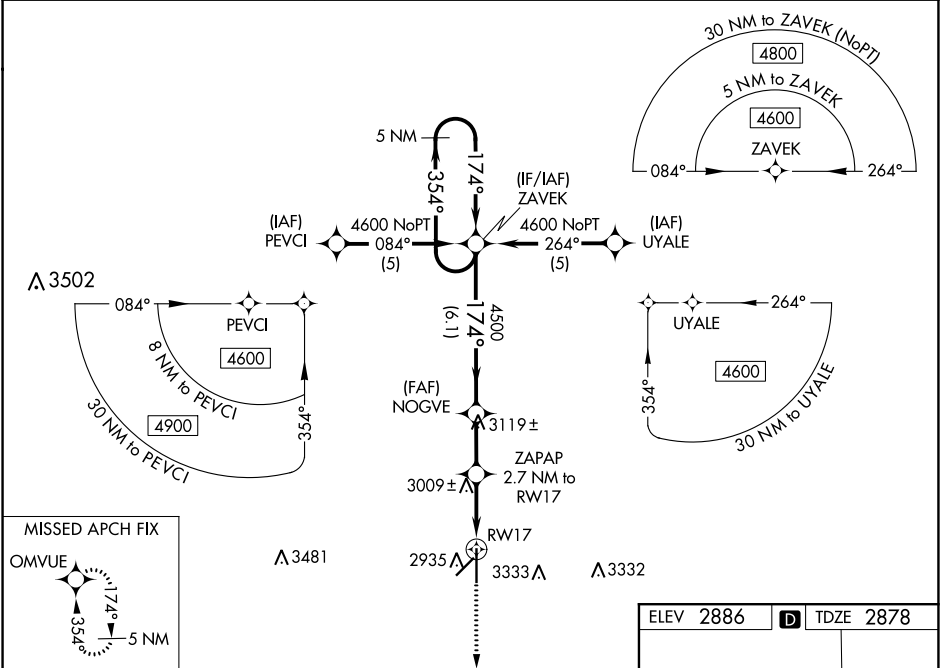
LIBERAL MID-AMERICA RGNL (L.B.L.)

⚠ For uncompensated Baro-VNAV systems, LNAV/VNAV NA below -20°C (-4°F) or above 53°C (128°F).

⚠ Circling NA east of Rwy 17-35. DME/DME RNP-0.3 NA. When local altimeter setting not received, use Guymon Muni altimeter setting: Increase all DA 112 feet and all MDA 120 feet; increase all visibilities ¾ mile. Helicopter visibility reduction below ¾ SM NA. VDP NA when using Guymon Muni altimeter setting. Baro-VNAV NA when using Guymon Muni altimeter setting.

MISSED APPROACH:
Climb to 4500 direct
OMVUE and hold.

AWOS-3PT 118.375	KANSAS CITY CENTER 134.0 257.865	UNICOM 122.8 (CTAF) 0
----------------------------	--	---------------------------------



5 NM Holding Pattern

VGSI and RNAV glidepath not coincident (VGSI Angle 3.00/TCH 54).

ZAVEK

NOGVE

ZAPAP 2.7 NM to RW17

RW17

OMVUE

*INAV only.

GP 3.00° TCH 50

4500

3780

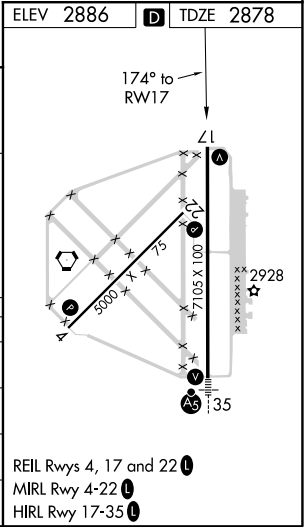
6.1 NM

2.2 NM

1.6 NM

1.1 NM

CATEGORY	A	B	C	D
LPV DA	3128-¾ 250 (300-¾)			
LNAV/VNAV DA	3320-1½ 442 (500-1½)			
LNAV MDA	3260-1	382 (400-1)	3260-1⅛	382 (400-1⅛)
C CIRCLING	3260-1 374 (400-1)	3340-1 454 (500-1)	3340-1½ 454 (500-1½)	3440-2 554 (600-2)



NC-2, 03 DEC 2020 to 31 DEC 2020

NC-2, 03 DEC 2020 to 31 DEC 2020