

WAAS CH <b>90405</b> <b>W22A</b>	APP CRS <b>219°</b>	Rwy Idg TDZE <b>2880</b> Apt Elev <b>2886</b>
----------------------------------------	------------------------	-----------------------------------------------------

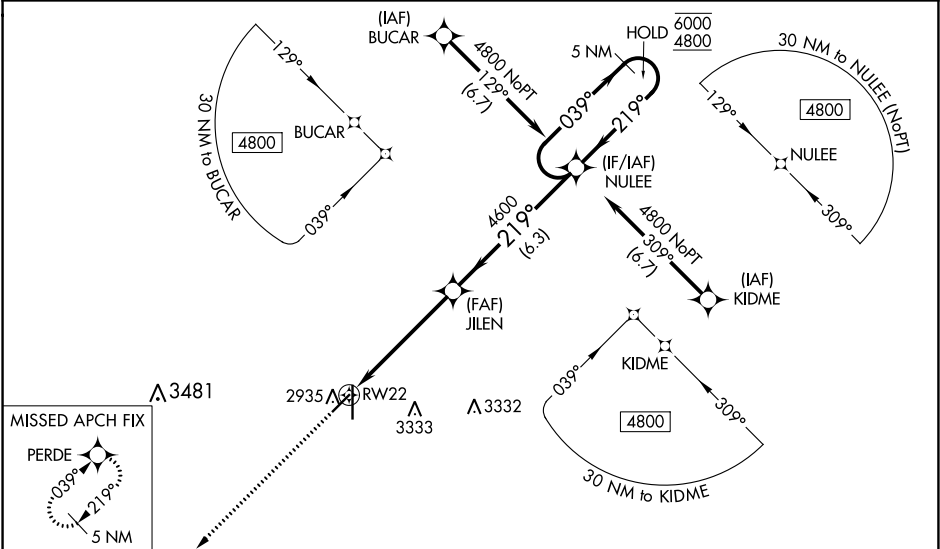
RNAV (GPS) RWY 22  
LIBERAL MID-AMERICA RGNL (L.B.L.)

RNP APCH.

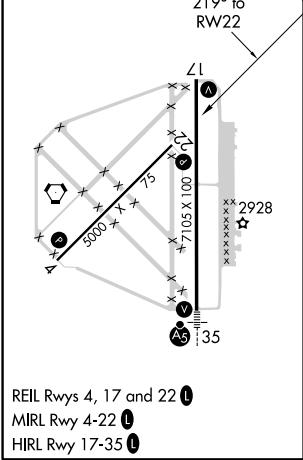
**⚠** Circling NA east of Rwy 17-35. Baro-VNAV NA when using Guymon Muni altimeter setting. For uncompensated Baro-VNAV systems, LNAV/VNAV NA below -20°C or above 54°C. VDP NA when using Guymon Muni altimeter setting. When local altimeter setting not received, use Guymon Muni altimeter setting: increase all DA 112 feet and all MDA 120 feet. Increase LPV all Cats visibilities ¼ SM; increase LNAV/VNAV all Cats visibility ⅓ SM; increase LNAV Cats C and D visibility ⅓ SM; Circling Cat C and D visibility ¼ SM.







MISSED APPROACH: Climb to 4800 direct PERDE and hold.

AWOS-3PT <b>118.375</b>	KANSAS CITY CENTER <b>134.0 257.865</b>	UNICOM <b>122.8 (CTAF) 0</b>
----------------------------	--------------------------------------------	---------------------------------



ELEV 2886	<b>D</b>	TDZE 2880
-----------	----------	-----------



4800	PERDE	NULEE				5 NM Holding Pattern
						
* LNAV only.	* 1.4 NM to RW22	JILEN	4600	219°	039°	6000 4800
	1.4 NM	3.9 NM	6.3 NM	GP 3.00° TCH 40		
CATEGORY	A	B	C	D		
LPV DA	3080-¾ 200 (200-¾)					
LNAV/ VNAV DA	3168-⅞ 288 (300-⅞)					
LNAV MDA	3360-1	480 (500-1)	3360-1⅓	480 (500-1⅓)		
 CIRCLING	3360-1 474 (500-1)	3360-1⅓ 474 (500-1⅓)	3360-1½ 474 (500-1½)	3440-2 554 (600-2)		