


WAAS CH 63005 W35A	APP CRS 354°	Rwy Idg 7101 TDZE 2875 Apt Elev 2886
--	------------------------	---

RNAV (GPS) RWY 35
LIBERAL MID-AMERICA RGNL (L.B.L.)

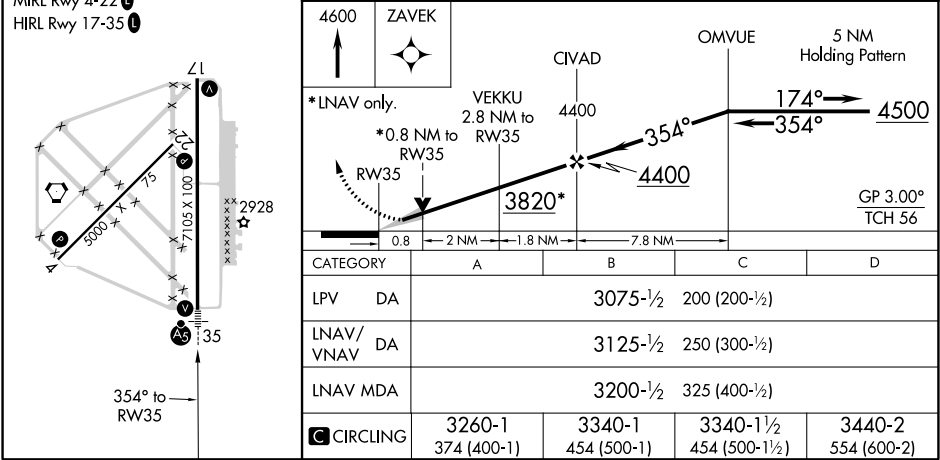
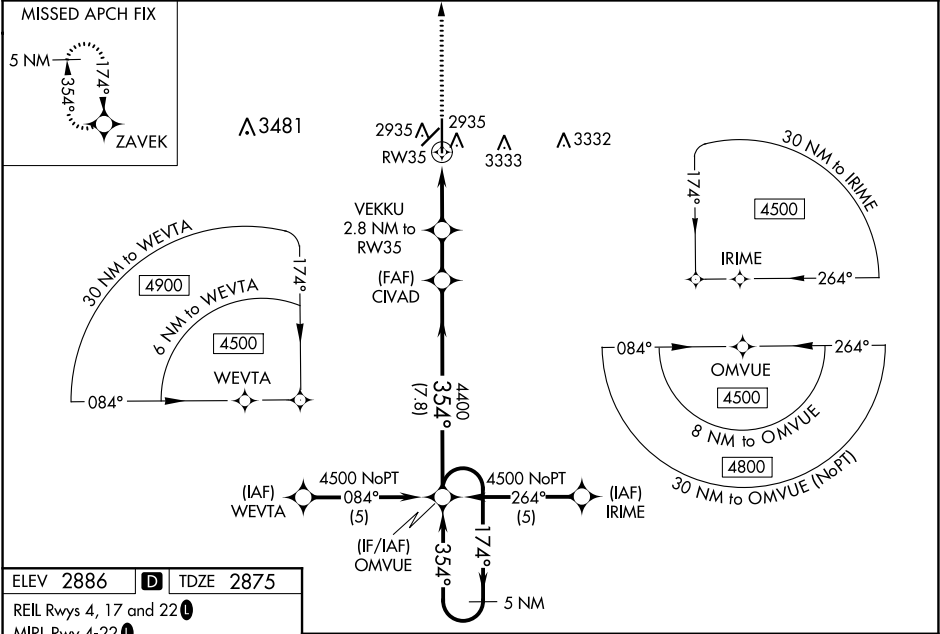
⚠ Baro-VNAV NA when using Guymon Muni altimeter setting. For uncompensated Baro-VNAV systems, LNAV/VNAV NA below -20°C (-4°F) or above 52°C (125°F). Circling NA east of Rwy 17-35. DME/DME RNP-0.3 NA. VDP NA when using Guymon Muni altimeter setting. When local altimeter setting not received, use Guymon Muni altimeter setting: Increase all DA 112 feet and all MDA 120 feet, increase LNAV Cats C and D visibility $\frac{3}{8}$ mile; Circling Cat D visibility $\frac{1}{4}$ mile.

MALSR



MISSED APPROACH: Climb to 4600 direct ZAVEK and hold.

AWOS-3PT 118.375	KANSAS CITY CENTER 134.0 257.865	UNICOM 122.8 (CTAF) 0
----------------------------	--	---------------------------------



NC-2, 03 DEC 2020 to 31 DEC 2020

NC-2, 03 DEC 2020 to 31 DEC 2020