

WAAS CH <b>72905</b> <b>W04A</b>	APP CRS <b>039°</b>	Rwy Idg TDZE <b>2886</b> Apt Elev <b>2886</b>
--	------------------------	---

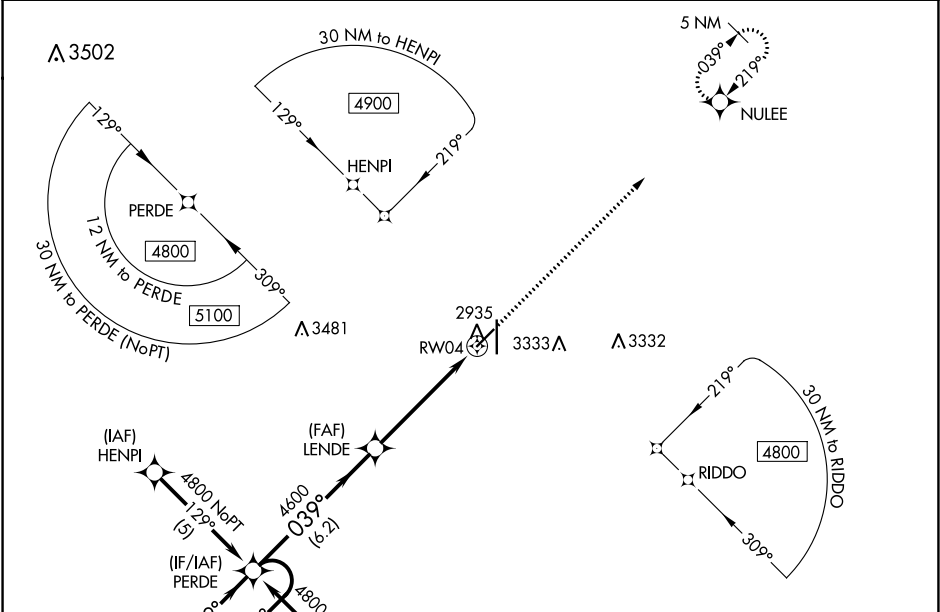
RNAV (GPS) RWY 4

LIBERAL MID-AMERICA RGNL (L.B.L.)

**⚠** For uncompensated Baro-VNAV systems, LNAV/VNAV NA below -20°C (-4°F) or above 54°C (130°F). Circling NA east of Rwy 17-35. DME/DME RNAV-0.3 NA. When local altimeter setting not received, use Guymon Muni altimeter setting: increase all DA 112 feet and all MDA 120 feet: increase all visibilities 3/8 mile. Baro-VNAV NA when using Guymon Muni altimeter setting. VDP NA when using Guymon Muni altimeter setting. Helicopter visibility reduction below 3/4 SM NA.

MISSED APPROACH:  
Climb to 4800 direct  
NULEE and hold.

AWOS-3PT <b>118.375</b>	KANSAS CITY CENTER <b>134.0 257.865</b>	UNICOM <b>122.8 (CTAF) 1</b>
----------------------------	--	---------------------------------



ELEV 2886		D		TDZE 2886	
GP 3.00° TCH 39					
CATEGORY	A	B	C	D	
LPV DA	3136-7/8 250 (300-7/8)				
LNAV/ VNAV DA	3300-1 3/8 414 (500-1 3/8)				
LNAV MDA	3400-1 514 (600-1)		3400-1 3/8 514 (600-1 3/8)		
CIRCLING	3400-1 514 (600-1)		3400-1 1/2 514 (600-1 1/2)		3440-2 554 (600-2)

REIL Rwy 4, 17 and 22 1

MIRL Rwy 4-22 1

HIRL Rwy 17-35 1

NC-2, 03 DEC 2020 to 31 DEC 2020

NC-2, 03 DEC 2020 to 31 DEC 2020