

VORTAC LBL <u>112.3</u> Chan 70	APP CRS 019°	Rwy Idg 5000 TDZE 2885 Apt Elev 2886
---	------------------------	---

VOR RWY 4

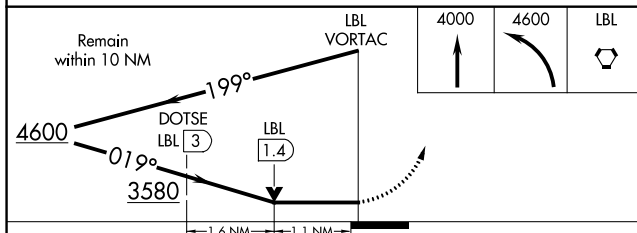
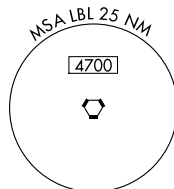
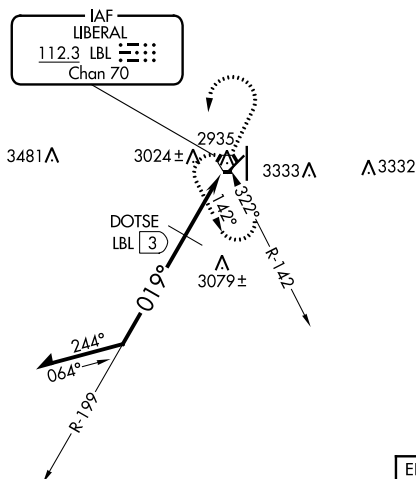
LIBERAL MID-AMERICA RGNL (LBL)



T Circling NA east of Rwy 17-35. When local altimeter setting not received, use Guymon altimeter setting and increase all MDA 120 feet, increase Circling Cat D visibility $\frac{1}{4}$ SM. Visibility reduction by helicopters NA. VDP NA when using Guymon Muni altimeter setting.

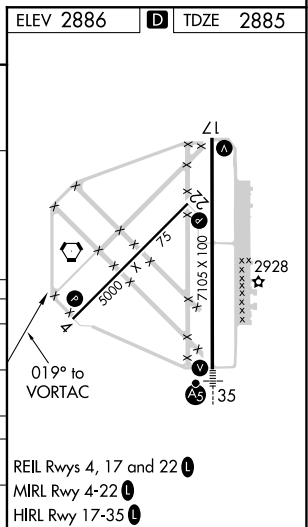
MISSED APPROACH: Climb to 4000 then climbing left turn to 4600 direct LBL VORTAC and hold.

AWOS-3PT 118.375	KANSAS CITY CENTER 134.0 257.865	UNICOM 122.8 (CTAF) 0
----------------------------	--	---------------------------------

△ 3502



CATEGORY	A	B	C	D
S-4	3580-1 695 (700-1)		3580-2 695 (700-2)	3580-2½ 695 (700-2½)
 CIRCLING	3580-1 694 (700-1)		3580-2 694 (700-2)	3580-2½ 694 (700-2½)
DME MINIMUMS				
S-4	3280-1 395 (400-1)			3280-1½ 395 (400-1½)
 CIRCLING	3340-1 454 (500-1)		3340-1½ 454 (500-1½)	3440-2 554 (600-2)



VOR RWY 4