

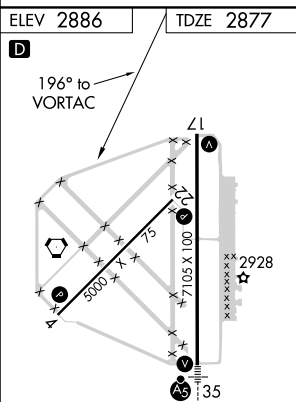
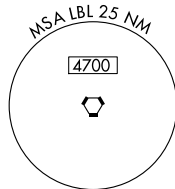
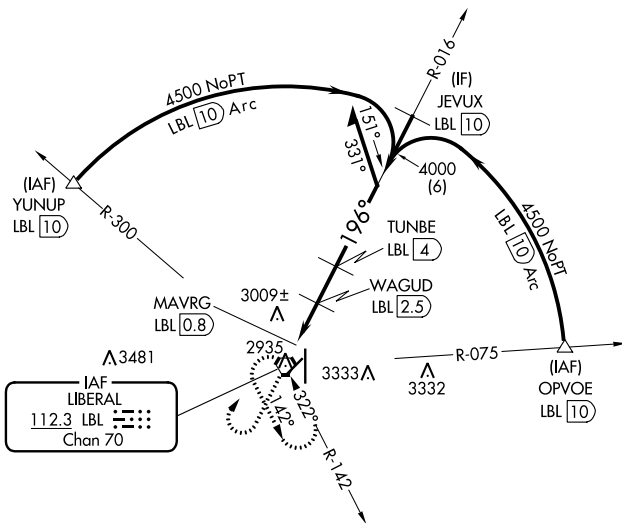
VORTAC LBL <u>112.3</u> Chan 70	APP CRS 196°	Rwy Idg 7101 TDZE 2877 Apt Elev 2886
---	------------------------	---

VOR/DME RWY 17
LIBERAL MID-AMERICA RGNL (LBL)

T Circling NA east of Rwy 17-35. When local altimeter setting not received, use
A Guymon altimeter setting and increase all MDA 120 feet, increase Circling Cat D
visibility $\frac{1}{4}$ SM. Visibility reduction by helicopters NA. VDP NA when using
Guymon Muni altimeter setting.

MISSED APPROACH: Climb to 4000 then climbing right turn to 4600 direct LBL VORTAC and hold.

AWOS-3PT 118.375	KANSAS CITY CENTER 134.0 257.865	UNICOM 122.8 (CTAF) 0
----------------------------	--	---------------------------------



MIRL Rwy 4-22 **L**
HIRL Rwy 17-35 **L**
REIL Rwy 4, 17 and 22 **L**

