

WAAS CH <b>56523</b> <b>W12A</b>	APP CRS <b>118°</b>	Rwy Idg TDZE Apt Elev	<b>4400</b> <b>3294</b> <b>3298</b>
--	------------------------	-----------------------------	---

RNAV (GPS) RWY 12

CHADRON MUNI (CDR)

⚠

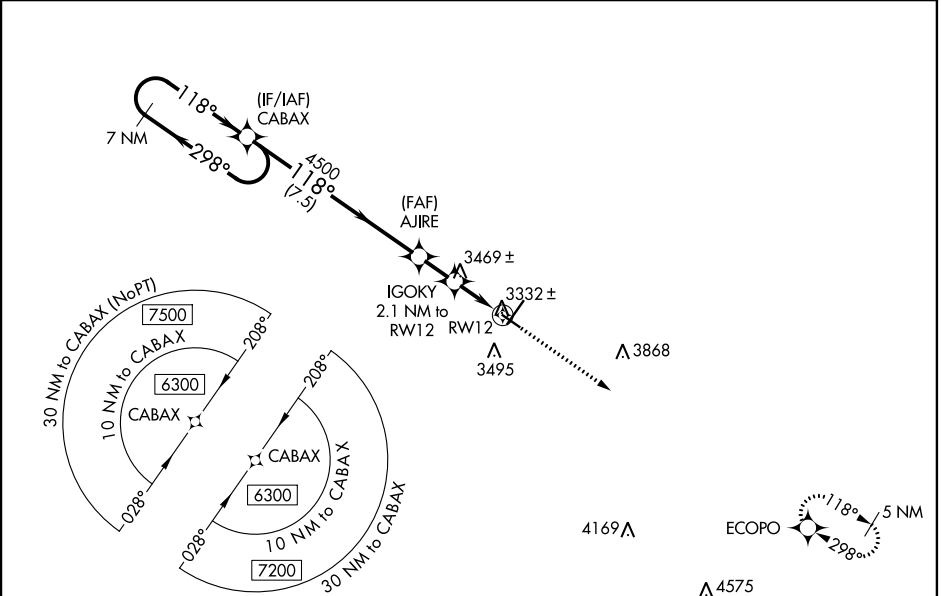
⚠

-32°C

Baro-VNAV NA when using Pine Ridge altimeter setting. For uncompensated Baro-VNAV systems, LNAV/VNAV NA below -21°C (-5°F) or above 54°C (130°F). DME/DME RNP-0.3 NA. When local altimeter setting not received, use Pine Ridge altimeter setting and increase all DA 70 feet and all MDA 80 feet; increase LPV all Cats visibility ½ mile, LNAV/VNAV all Cats visibility ¼ mile, and Circling Cat C visibility ¼ mile.

MISSED APPROACH:  
Climb to 5900 direct  
ECOPO and hold.

ASOS <b>118.05</b>	DENVER CENTER <b>127.95 338.2</b>	UNICOM <b>122.8</b> (CTAF) <b>📶</b>
-----------------------	--------------------------------------	--



7 NM Holding Pattern

GP 3.00° TCH 42

6300

298°

118°

118°

4500

7.5 NM

1.6 NM

2.1 NM

RW12

VGSI and RNAV glidepath not coincident (VGSI Angle 3.00/TCH 29).

CABAX

AJIRE

IGOKY

2.1 NM to RW12

\*LNAV only

5900

ECOPO

CATEGORY	A	B	C	D
LPV DA	3544-1	250 (300-1)		NA
LNAV/VNAV DA	3719-1½	425 (500-1½)		NA
LNAV MDA	3720-1	426 (500-1)	3720-1¼ 426 (500-1¼)	NA
CIRCLING	3820-1	522 (600-1)	3920-1¾ 622 (700-1¾)	NA

118° to RW12

5900 X 100

0.5% UP

4400 X 75

3363

HIRL Rwy 3-21

MIRL Rwy 12-30

REIL Rwy 21 and 30