

WAAS CH <b>65631</b> <b>W13A</b>	APP CRS <b>136°</b>	Rwy Idg <b>4498</b> TDZE <b>2130</b> Apt Elev <b>2131</b>
--	------------------------	---

RNAV (GPS) RWY 13

KEARNEY RGNL (E.A.R.)

RNP APCH.

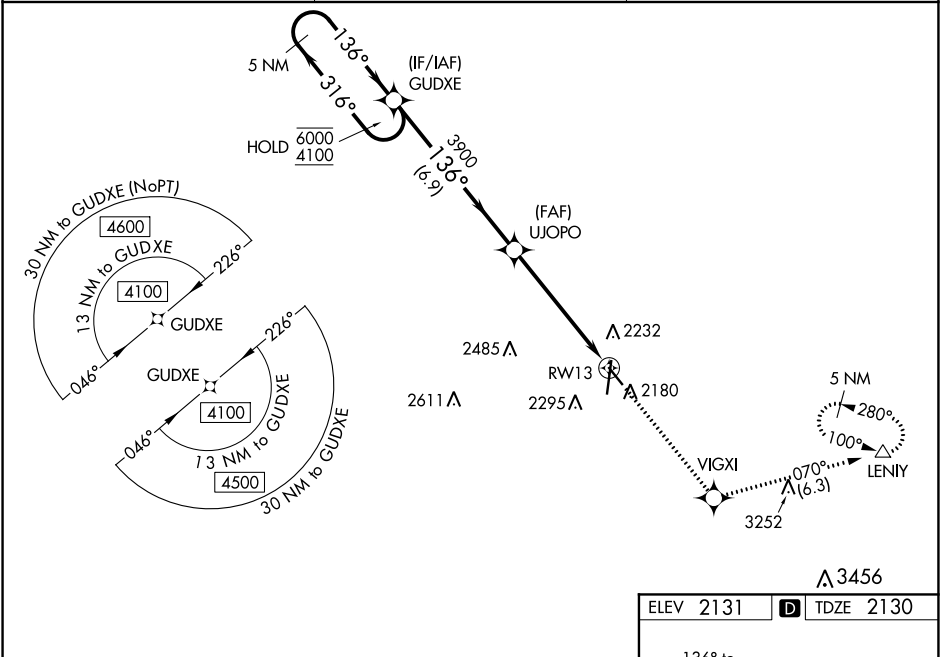
▼

⚠

Baro-VNAV and VDP NA when using Holdrege altimeter setting. For uncompensated Baro-VNAV systems, LNAV/VNAV NA below -23°C or above 54°C. When local altimeter setting not received, use Holdrege altimeter setting: increase LPV DA to 2407 feet and all Cats visibility 3⁄8 SM; increase LNAV/VNAV DA to 2457 feet and all Cats visibility 3⁄8 SM and all MDAs 80 feet; increase visibility LNAV and Circling Cat C 1⁄8 SM.

MISSED APPROACH: Climb to 4300 direct VIGXI and on track 070° to LENIY and hold.

AWOS-3PT <b>123.875</b>	MINNEAPOLIS CENTER <b>119.4 278.8</b>	UNICOM <b>123.0 (CTAF) 0</b>
----------------------------	--	---------------------------------



VGSI and RNAV glidepath not coincident.			
5 NM Holding Pattern			
<div><div>6000</div><div>4100</div></div> <div><div>GP 3.00°</div><div>TCH 43</div></div> <div><div>316°</div><div>136°</div></div> <div><div>GUDXE</div><div>UJOPO</div><div>RW13</div></div> <div><div>3900</div><div>3900</div></div> <div><div>6.9 NM</div><div>3.9 NM</div><div>1.5 NM</div></div>			
*1.5 NM to RW13			
*LNAV only			
CATEGORY	A	B	D
LPV DA	2330-3⁄4	200 (200-3⁄4)	NA
LNAV/VNAV DA	2380-3⁄4	250 (300-3⁄4)	NA
LNAV MDA	2720-1	590 (600-1)	2720-1 3⁄4 590 (600-1 3⁄4)
CIRCLING	2720-1	589 (600-1)	2720-1 3⁄4 589 (600-1 3⁄4)

