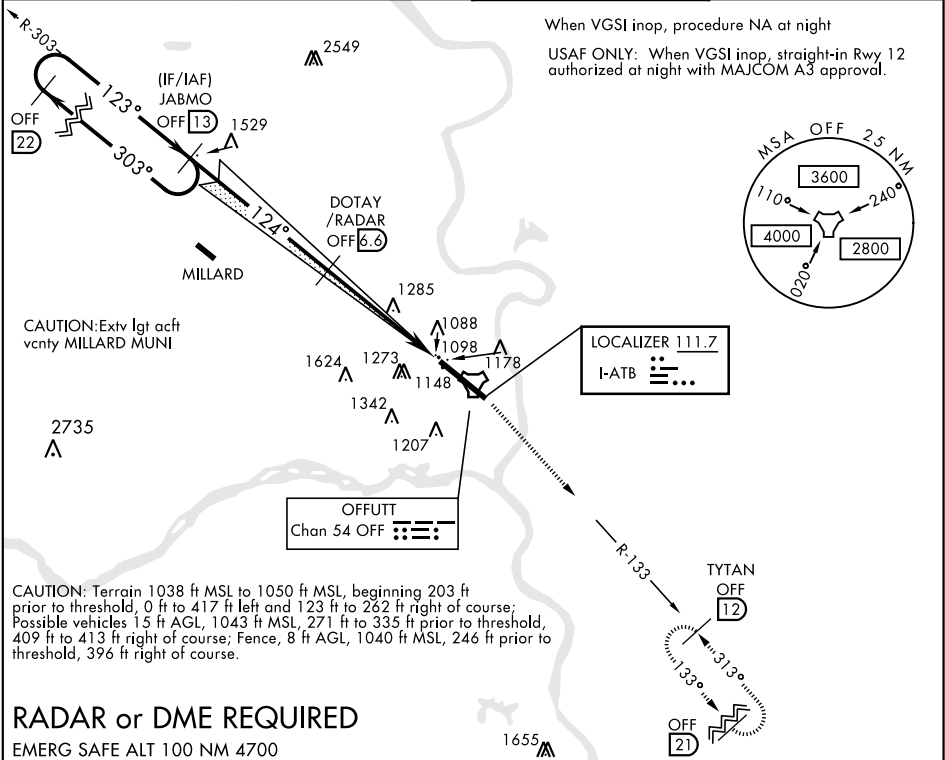


OMAHA, NEBRASKA

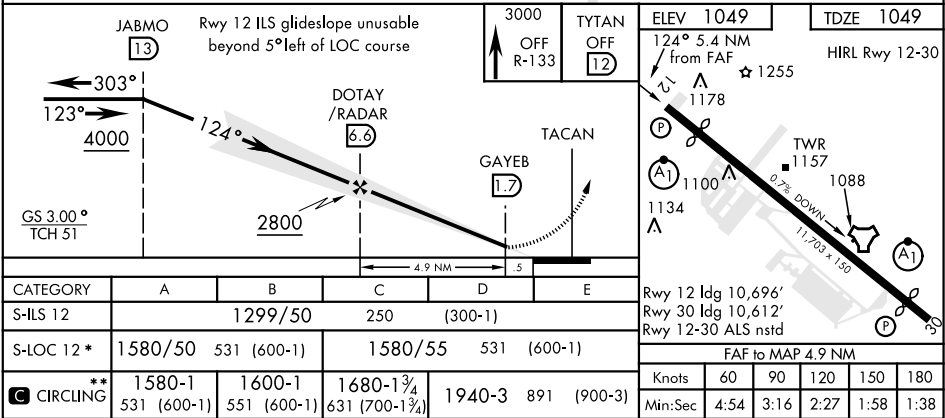
ILS or LOC RWY 12

LOC I-ATB <b>111.7</b>	APCH CRS <b>124°</b>	Rwy ldg <b>10,696</b> TDZE <b>1049</b> Arprt Elev <b>1049</b>	AL-544 [USAF]	OFFUTT AFB (KOFF)
* When ALS inop, increase CAT AB RVR to 55, CAT CDE vis to 1 3/8 miles. ** Circling not authorized N of Rwy 12-30.			ALSF-1 	MISSED APPROACH: Climb to 3000 via OFF TACAN R-133 to TYTAN and hold.
ATIS <b>126.025 273.5</b>	OMAHA APP CON E <b>124.5 263.0</b> W <b>120.1 354.05</b>	OFFUTT TOWER <b>123.7 279.625</b>	GND CON <b>121.7 289.4</b>	



RADAR or DME REQUIRED

EMERG SAFE ALT 100 NM 4700



OMAHA, NEBRASKA

41°07'N-95°54'W

OFFUTT AFB (KOFF)

Amtd 5 13SEP18

ILS or LOC RWY 12

NC-2, 03 DEC 2020 to 31 DEC 2020

NC-2, 03 DEC 2020 to 31 DEC 2020