

LOC BC RWY 31
PHILIP BILLARD MUNI (TOP)

MISSED APPROACH: Climbing right turn to 2800 direct TOP VORTAC and hold.

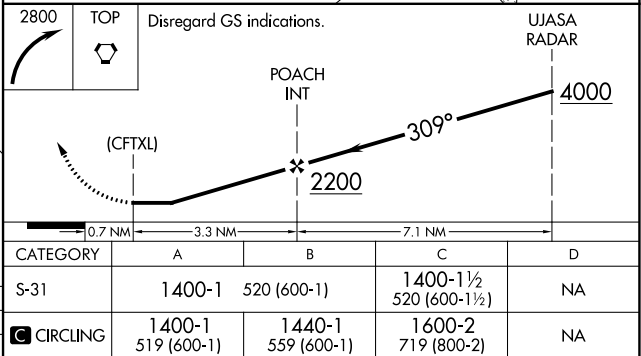
Diagram illustrating the FAF to MAP 3.3 NM segment of the flight path. The path is shown as a thick black line, with various airports and landmarks marked. Key locations include:

- 943 (top left)
- 891 (top left, near 943)
- 907 (top right)
- 914 (middle left)
- 961 (bottom left)
- 963 (TWR, middle right)
- 896 (bottom right)

Distances and bearings are indicated along the path:

- 81 (distance from 943)
- 36 (distance from 914)
- 896 (distance from 963)
- 309° 4 NM from FAF (bearing and distance to 896)

FAF to MAP 3.3 NM					
Knots	60	90	120	150	180
Min:Sec	3:18	2:12	1:39	1:19	1:00

RADAR REQUIRED
BACK COURSE

NC-2, 03 DEC 2020 to 31 DEC 2020