




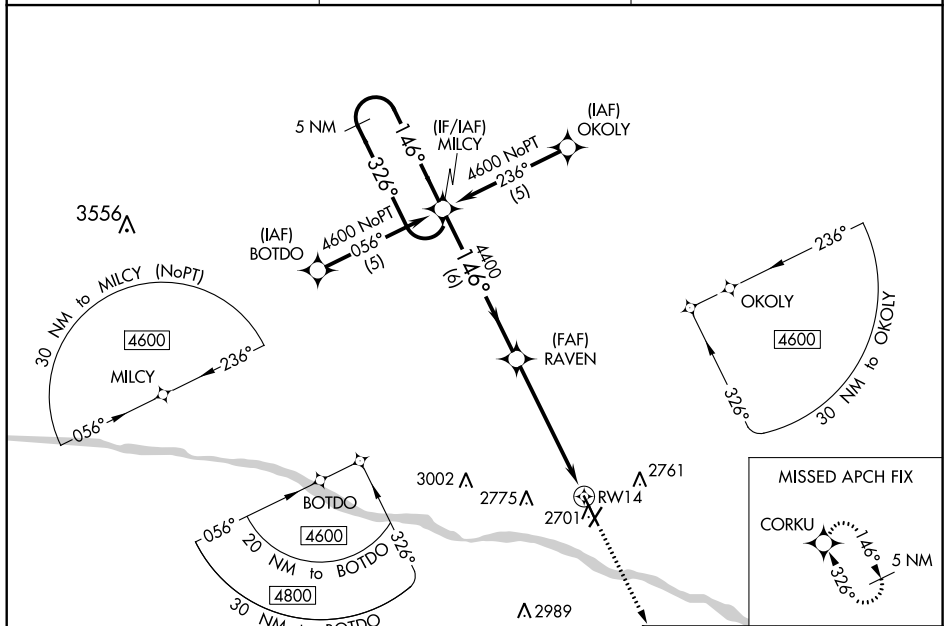
WAAS CH 65609 W14A	APP CRS 146°	Rwy Idg 6329 TDZE 2586 Apt Elev 2596
--	------------------------	--

RNAV (GPS) RWY 14

DODGE CITY RGNL (DDC)

  -20°C	DME/DME RNP-0.3 NA. For uncompensated Baro-VNAV systems, LNAV/VNAV NA below -19°C (-2°F) or above 54°C (130°F). For inop ALS, increase LPV all Cats visibility to 7/8 SM and LNAV/VNAV all Cats visibility to 1 3/8 SM.	MALSR 	MISSED APPROACH: Climb to 4600 direct CORKU and hold.
--	---	--	---

ASOS 118.525	KANSAS CITY CENTER 125.2 269.4	UNICOM 122.7 (CTAF) 0
------------------------	--	---------------------------------



5 NM Holding Pattern

VGS1 and RNAV glidepath not coincident (VGS1 Angle 3.00/TCH 55).

MILCY

4600 ← 326°
146° →

GP 3.00°
TCH 40

RAVEN

4400

*1.2 NM to RW14

4400

6 NM

4.3 NM

1.2 NM

*LNAV only

CATEGORY	A	B	C	D
LPV DA	2836-½		250 (300-½)	
LNAV/VNAV DA	2991-1		405 (400-1)	
LNAV MDA	3020-½	434 (500-½)	3020-¾	434 (500-¾)

C CIRCLING

3040-1 444 (500-1)	3080-1 484 (500-1)	3320-2 724 (800-2)	3320-2 ¼ 724 (800-2 ¼)
-----------------------	-----------------------	-----------------------	---------------------------

Diagram of runway layout showing RW14, RW15, RW16, RW17, RW18, RW19, RW20, RW21, RW22, RW23, RW24, RW25, RW26, RW27, RW28, RW29, RW30, RW31, RW32, RW33, RW34, RW35, RW36, RW37, RW38, RW39, RW40, RW41, RW42, RW43, RW44, RW45, RW46, RW47, RW48, RW49, RW50, RW51, RW52, RW53, RW54, RW55, RW56, RW57, RW58, RW59, RW60, RW61, RW62, RW63, RW64, RW65, RW66, RW67, RW68, RW69, RW70, RW71, RW72, RW73, RW74, RW75, RW76, RW77, RW78, RW79, RW80, RW81, RW82, RW83, RW84, RW85, RW86, RW87, RW88, RW89, RW90, RW91, RW92, RW93, RW94, RW95, RW96, RW97, RW98, RW99, RW100.