

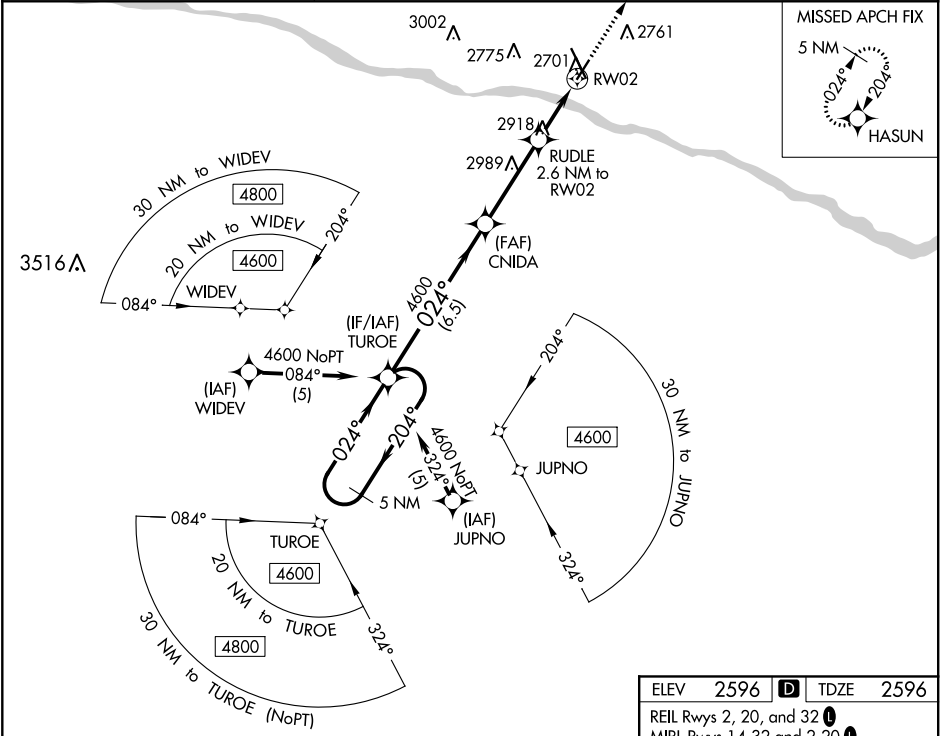
WAAS CH 73040 W02A	APP CRS 024°	Rwy Idg TDZE 2596 Apt Elev 2596
--	------------------------	---

RNAV (GPS) RWY 2

DODGE CITY RGNL (DDC)

-20°C	For uncompensated Baro-VNAV systems, LNAV/VNAV NA below -9°C (16°F) or above 54°C (130°F). Rwy 02 helicopter visibility reduction below ¾ SM NA. DME/DME RNP-0.3 NA.	MISSED APPROACH: Climb to 4600 direct HASUN and hold.
-------	--	---

ASOS 118.525	KANSAS CITY CENTER 125.2 269.4	UNICOM 122.7 (CTAF) 0
------------------------	--	---------------------------------



VGSi and RNAV glidepath not coincident (VGSi Angle 3.00/TCH 37)				
5 NM Holding Pattern				
4600 ← 204° → 024° → 024° → 4600				
GP 3.00° TCH 37				
6.5 NM 3.6 NM 0.9 NM 1.7 NM				
CATEGORY	A	B	C	D
LPV DA	2846-7/8	250 (300-7/8)		NA
LNAV/VNAV DA	2883-1	287 (300-1)		NA
LNAV MDA	3180-1	584 (600-1)	3180-1 5/8 584 (600-1 5/8)	NA
CIRCLING	3180-1	584 (600-1)	3320-2 724 (800-2)	NA

