

WAAS
CH **78440**
W20A

APP CRS
204°

Rwy Idg
TDZE **2592**
Apt Elev **2596**

RNAV (GPS) RWY 20

DODGE CITY RGNL (DDC)

-20°C

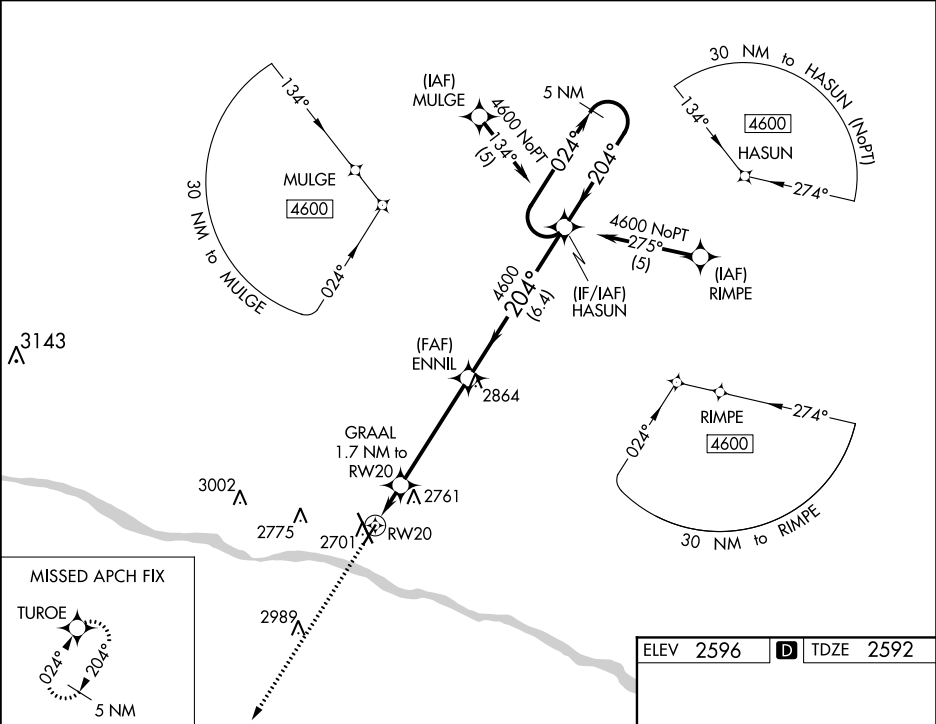
For uncompensated Baro-VNAV systems, LNAV/VNAV NA below -9°C (16°F) or above 54°C (130°F). DME/DME RNP-0.3 NA.

MISSED APPROACH: Climb to 4600 direct TUREO and hold.

ASOS
118.525

KANSAS CITY CENTER
125.2 269.4

UNICOM
122.7 (CTAF) 0



4600

TUREO

GRAAL
1.7 NM to RW20

ENNIL
4600

HASUN

5 NM Holding Pattern

*LNAV only

*1.0 NM to RW20

RW20

3140*

4600

GP 3.00°

TCH 45

1.0 NM

0.7 NM

4.6 NM

6.4 NM

CATEGORY	A	B	C	D
LPV DA	2842-7/8	250 (300-7/8)		NA
LNAV/VNAV DA	2842-7/8	250 (300-7/8)		NA
LNAV MDA	2920-1	328 (400-1)		NA
CIRCLING	3040-1 444 (500-1)	3080-1 484 (500-1)	3320-2 724 (800-2)	NA

ELEV 2596

TDZE 2592

204° to RW20

6892 ft 100

4649 ft 100

32

REIL Rwy 2, 20 and 32 0

MRL Rwy 14-32 and 2-20 0