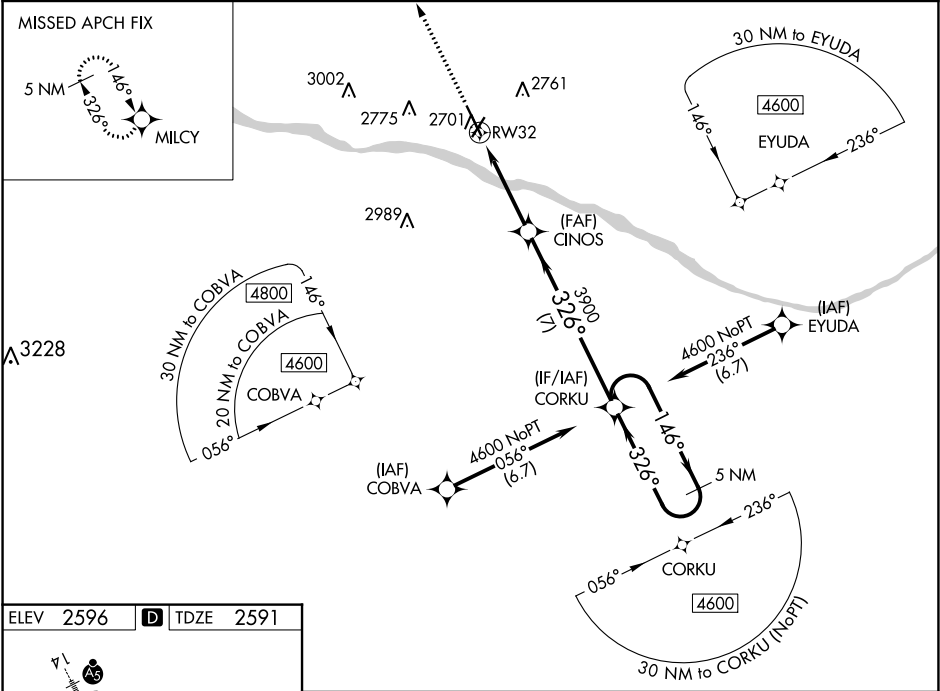


WAAS CH <b>81938</b> <b>W32A</b>	APP CRS <b>326°</b>	Rwy Idg TDZE Apt Elev <b>6329</b> <b>2591</b> <b>2596</b>
--	------------------------	--

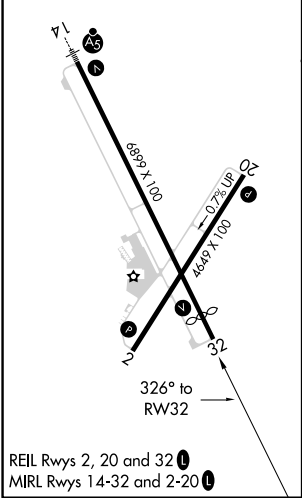
RNAV (GPS) RWY 32  
DODGE CITY RGNL (DDC)

<b>⚠</b> <b>⚙</b> -20°C	DME/DME RNP-0.3 NA. Baro-VNAV and VDP NA when using Garden City altimeter setting. For uncompensated Baro-VNAV systems, LNAV/VNAV NA below -19°C (-2°F) or above 54°C (130°F). When local altimeter setting not received, use Garden City altimeter setting: increase LPV DA to 2919 feet and all visibilities ¾ miles, LNAV/VNAV DA to 2969 feet and all visibilities ¾ mile; increase all MDA 140 feet and LNAV visibility Cat C and D ¾ mile and Circling visibility Cat C and D ½ mile.	MISSED APPROACH: Climb to 4600 direct MILCY and hold.
----------------------------	---	--

ASOS <b>118.525</b>	KANSAS CITY CENTER <b>125.2 269.4</b>	UNICOM <b>122.7 (CTAF) 0</b>
------------------------	--	---------------------------------



ELEV 2596	<b>D</b>	TDZE 2591
-----------	----------	-----------



4600

MILCY

↑

✦

CINOS

3900

326°

3900

CORKU

5 NM

Holding Pattern

146°

326°

4600

GP 3.00°

TCH 40

\*LNAV only.

\*0.9 NM to RW32

RW32

0.9 NM

3.1 NM

7 NM

CATEGORY	A	B	C	D
LPV DA	2791-¾		200 (200-¾)	
LNAV/VNAV DA	2841-⅞		250 (300-⅞)	
LNAV MDA	2920-1		329 (400-1)	
<b>C</b> CIRCLING	3040-1 444 (500-1)	3080-1 484 (500-1)	3320-2 724 (800-2)	3320-2¼ 724 (800-2¼)

NC-2, 03 DEC 2020 to 31 DEC 2020

NC-2, 03 DEC 2020 to 31 DEC 2020