

WAAS CH 48920 W30A	APP CRS 305°	Rwy Idg 5499 TDZE 3654 Apt Elev 3657
--	------------------------	---

RNAV (GPS) RWY 30

RENNER FIELD/GOODLAND MUNI (GLD)

Baro-VNAV NA when using Burlington, CO altimeter setting. For uncompensated Baro-VNAV systems, LNAV/VNAV NA below -22°C (-7°F) or above 54°C (130°F).
Circling NA south of Rwy 5 and 30. DME/DME RNP-0.3 NA. VDP NA with Burlington, CO altimeter setting. When local altimeter setting not received, use Burlington, CO altimeter setting and increase all DA 144 feet and all MDA 160 feet. Increase LPV all Cats visibilities to ½ mile, LNAV/VNAV all Cats visibilities to ⅔ mile, LNAV Cat C/D visibilities to 1 mile, Circling Cat C visibility to 1 ¼, and Cat D visibility to 2 ¼ mile.
Circling Rwy 5, 23 NA at night. Circling NA to Rwy 5 and 35.

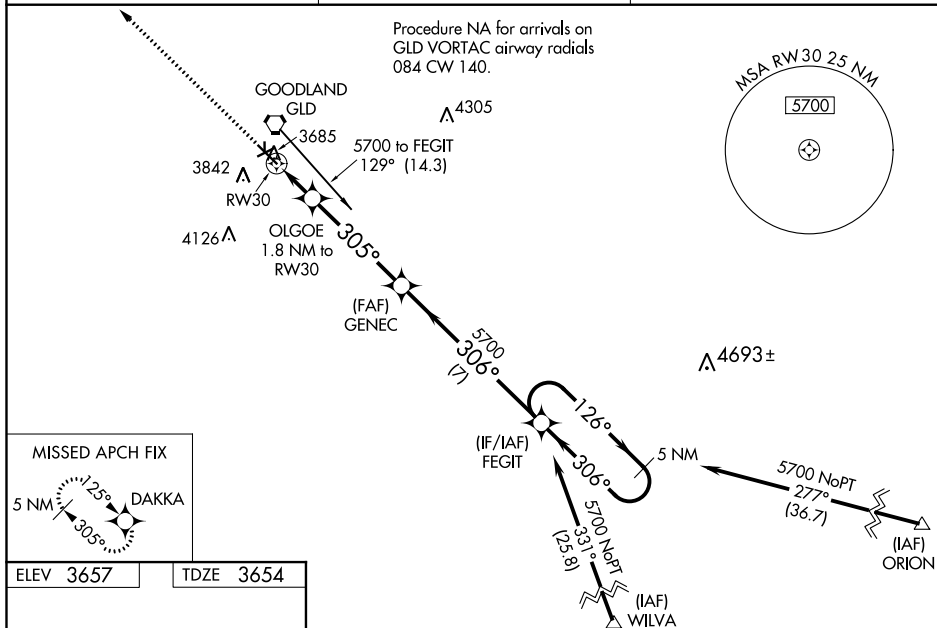
MALSR



MISSED APPROACH:
Climb to 5600 direct
DAKKA and hold.

ASOS
121.025DENVER CENTER
132.7 226.675

UNICOM
122.8 (CTAF) **L**



ELEV 3657	TDZE 3654
-----------	-----------

