

WAAS CH 99704 W35A	APP CRS 347°	Rwy Idg 5000 TDZE 1864 Apt Elev 1864
----------------------------------------	------------------------	-----------------------------------------------------------------

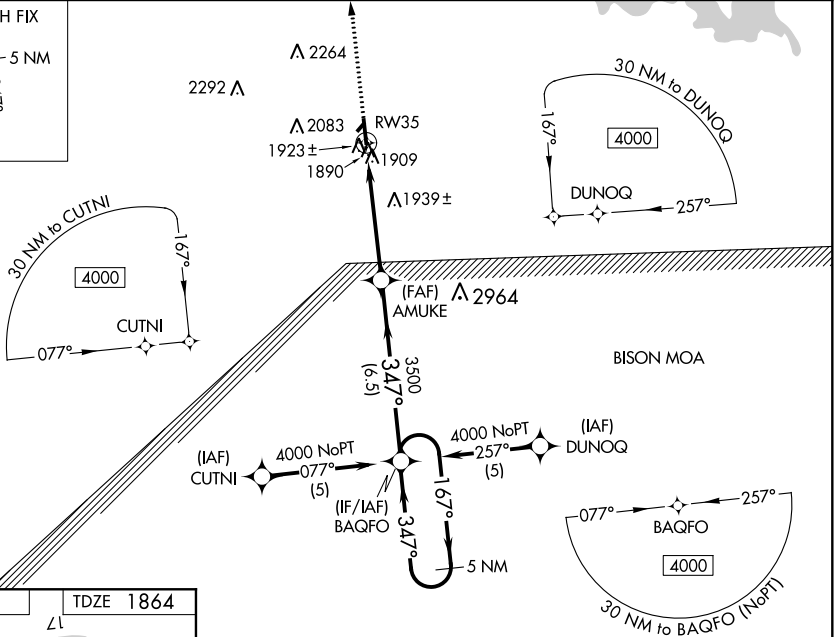
RNAV (GPS) RWY 35
RUSSELL MUNI (RSL)

T Baro-VNAV NA when using Hays altimeter setting. For uncompensated Baro-VNAV systems, LNAV/VNAV NA below -18°C (0°F) or above 54°C (130°F).
A DME/DME RNP-0.3 NA. VDP NA when using Hays altimeter setting. When local altimeter setting not received, use Hays altimeter setting: increase LPV all Cats DA to 2187 feet, LNAV/VNAV all Cats DA to 2267 feet and all visibilities ¼ mile; increase all MDA 80 feet and LNAV Cat C visibility ½ mile. Circling NA to Rws 3 and 21.

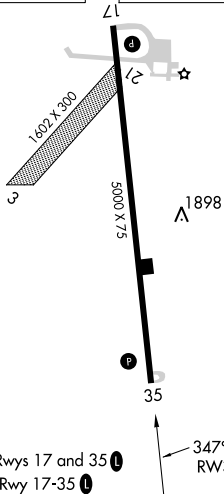
MISSED APPROACH: Climb to 4000 direct EDITE and hold.

ASOS 128.325	KANSAS CITY CENTER 124.4 322.4	UNICOM 122.7 (CTAF) 0
------------------------	------------------------------------------	---------------------------------

MISSED APCH FIX



ELEV 1864		TDZE 1864
-----------	--	-----------

REIL Rwy 17 and 35 **L**

RUSSELL, KANSAS
Orig-A 26MAY16

VGS1 and RNAV glidepath not coincident
(VGS1 Angle 3.00/TCH 40).

***LNAV only.**

RW35

*0.9 NM to RW35

AMUKE

BAQFO

5 NM Holding Pattern

167° → 4000

← 347°

GP 3.00°
TCH 35

CATEGORY	A	B	C	D
LPV DA	2118-1 254 (300-1)			NA
LNAV/VNAV DA	2198-1½ 334 (400-1½)			NA
LNAV MDA	2200-1 336 (400-1)			NA
CIRCLING	2240-1 376 (400-1)	2320-1 456 (500-1)	2320-1½ 456 (500-1½)	NA

38°52'N-98°49'W

RUSSELL MUNI (RSL)
RNAV (GPS) RWY 35