

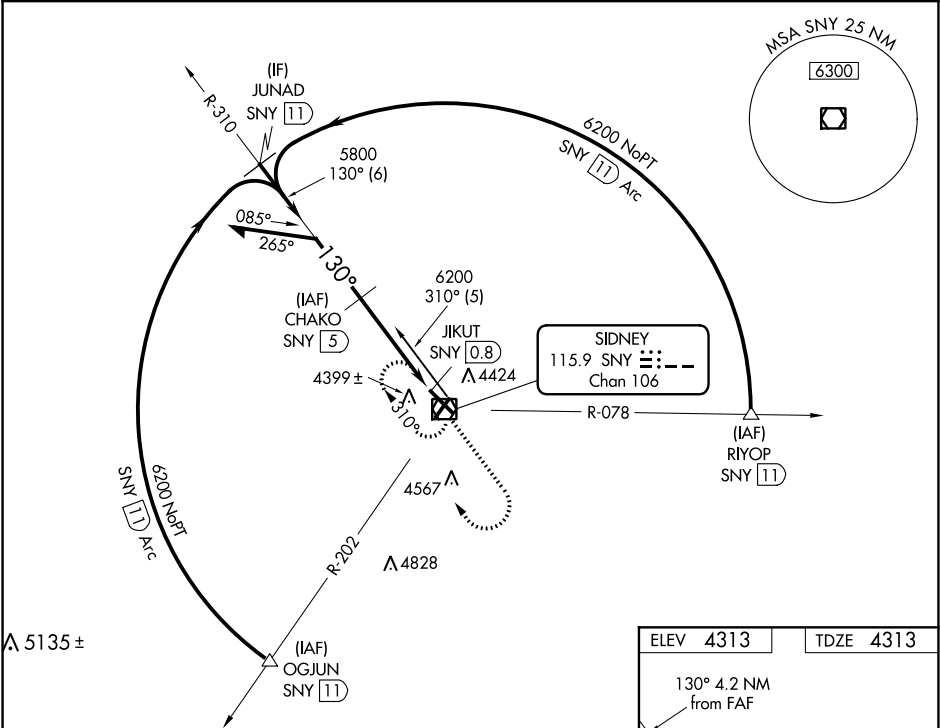
VOR/DME SNY	APP CRS	Rwy Idg	6600
115.9	130°	TDZE	4313
Chan 106		Apt Elev	4313

VOR/DME RWY 13
SIDNEY MUNI/LLOYD W CARR FIELD (SNY)

⚠ VDP NA when using Kimball altimeter setting. When local altimeter setting not received, use Kimball altimeter setting and increase all MDA 160 feet and S-13 Cats C and D visibility ½ mile, Circling Cats C and D visibility ¼ mile.

MISSED APPROACH: Climb to 6200 then right turn direct SNY VOR/DME and hold.

ASOS 125.775	DENVER CENTER 118.475 225.4	UNICOM 122.8 (CTAF) 0
-----------------	--------------------------------	--------------------------



VGSI and descent angles not coincident (VGSI Angle 3.00/TCH 45).
Remain within 10 NM

6200 310°
5800 130°

CHAKO SNY 5

3.25° TCH 44

3.1 NM 1.1 NM

6200 SNY 1.9

JLKUT SNY 0.8

SNY VOR/DME

CATEGORY	A	B	C	D
S-13	4700-1	387 (400-1)		4700-1¼ 387 (400-1¼)
CIRCLING	4760-1 447 (500-1)	4780-1 467 (500-1)	4780-1½ 467 (500-1½)	4880-2 567 (600-2)

