

WAAS CH <b>58320</b> <b>W32A</b>	APP CRS <b>319°</b>	Rwy Idg TDZE Apt Elev	<b>4401</b> <b>1312</b> <b>1324</b>
--	------------------------	-----------------------------	---

RNAV (GPS) RWY 32

BEATRICE MUNI (BIE)

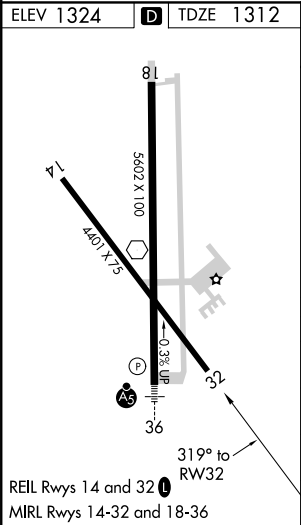
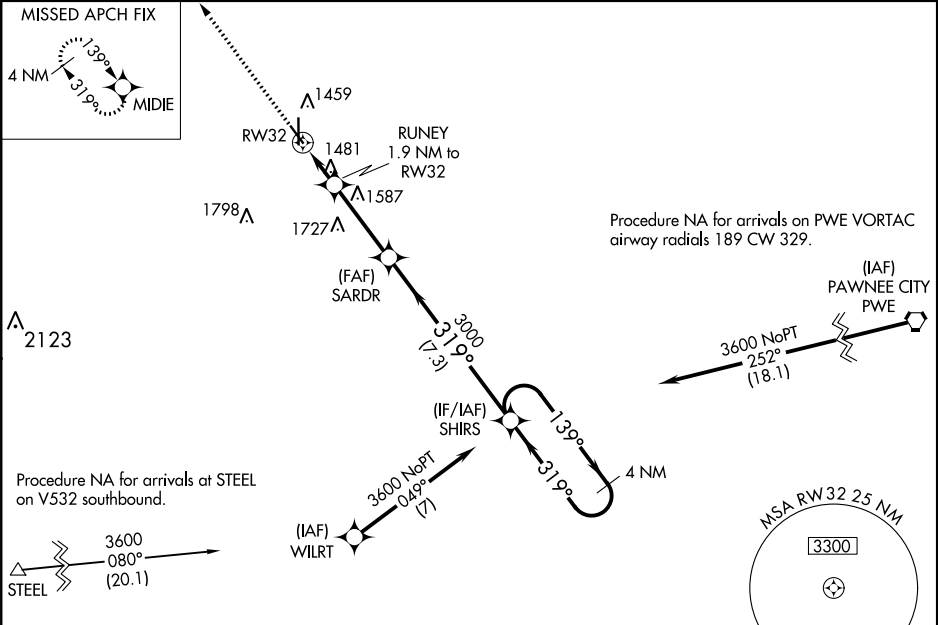
▼

▲

For uncompensated Baro-VNAV systems, LNAV/VNAV NA below -22°C (-7°F) or above 54°C (130°F).  
DME/DME RNP-0.3 NA.  
Rwy 32 helicopter visibility reduction below ¾ SM NA.

MISSED APPROACH: Climb to 3600 direct MIDIE and hold.

AWOS-3 <b>125.325</b>	MINNEAPOLIS CENTER <b>126.4 317.7</b>	UNICOM <b>122.8 (CTAF) 0</b>
--------------------------	--	---------------------------------



3600

↑

MIDIE

✧

\*LNAV only

RW32

1.2 NM

0.7

RW32

1.2 NM to RW32

1940\*

0.7

RUNEY

1.9 NM to RW32

SARDR

3000

SHIRS

4 NM Holding Pattern

139°

3600

← 319°

319°

3000

GP 3.00°

TCH 45

CATEGORY	A	B	C	D
LPV DA	1562-1 250 (300-1)			
LNAV/VNAV DA	1685-1¼ 373 (400-1¼)			
LNAV MDA	1740-1	428 (500-1)	1740-1¼	428 (500-1¼)
CIRCLING	1820-1	496 (500-1)	2000-2 676 (700-2)	2100-2½ 776 (800-2½)