

WAAS
CH **56220**
W20A

APP CRS
194°

Rwy Idg
TDZE
Apt Elev

5801
1545
1573

RNAV (GPS) RWY 20

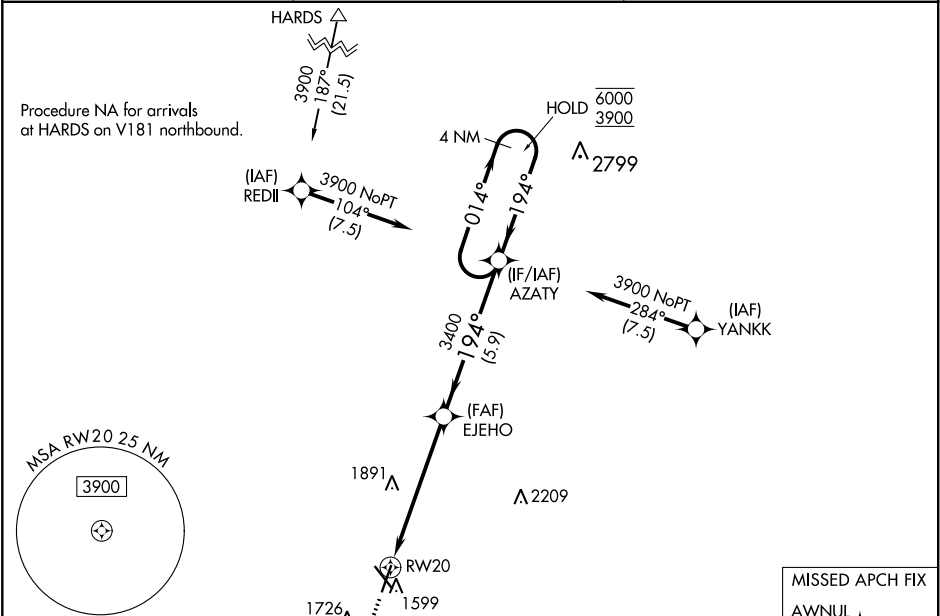
NORFOLK RGNL/KARL STEFAN MEMORIAL FIELD (OFK)

RNP APCH.

Rwy 20 helicopter visibility reduction below ¾ SM NA.
For uncompensated Baro-VNAV systems, LNAV/VNAV NA below -25°C or above 54°C.

MISSED APPROACH:
Climb to 3900 direct
AWNUL and hold.

ASOS 119.025	MINNEAPOLIS CENTER 125.025 235.625	UNICOM 122.7 (CTAF) 0
------------------------	--	---------------------------------



ELEV 1573 **D** TDZE 1545

194° to RW20

0.4% UP

0.7% UP

5806 x 100

5801 x 100

1598

REIL Rwy 32

HIRL Rwy 2-20

MIRL Rwy 14-32

3900

AWNUL

*LNAV only

*1.6 NM to RW20

EJEHO

3400

194°

3400

1.6 NM

4.1 NM

5.9 NM

AZATY

4 NM Holding Pattern

014° → 6000

← 194° 3900

GP 3.00°

TCH 40

CATEGORY	A	B	C	D
LPV DA		1795-1	250 (300-1)	
LNAV/VNAV DA		1799-1	254 (300-1)	
LNAV MDA	2080-1	535 (600-1)	2080-1½	535 (600-1½)
C CIRCLING	2080-1 507 (600-1)	2100-1 527 (600-1)	2260-2 687 (700-2)	2360-2½ 787 (800-2½)

NC-2, 03 DEC 2020 to 31 DEC 2020

NC-2, 03 DEC 2020 to 31 DEC 2020