

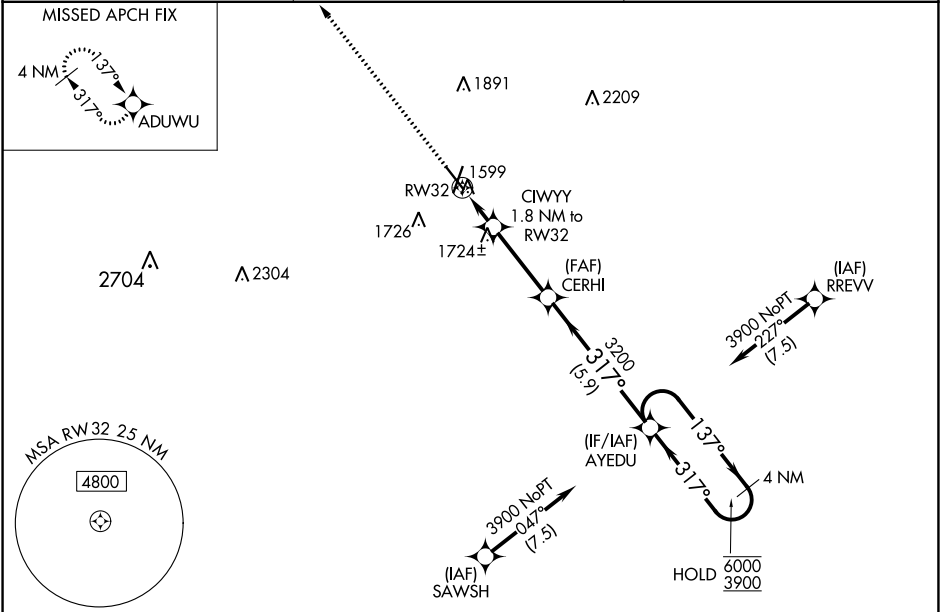
WAAS CH 86415 W32A	APP CRS 317°	Rwy Idg TDZE 1560 Apt Elev 1573
--	------------------------	---

RNAV (GPS) RWY 32

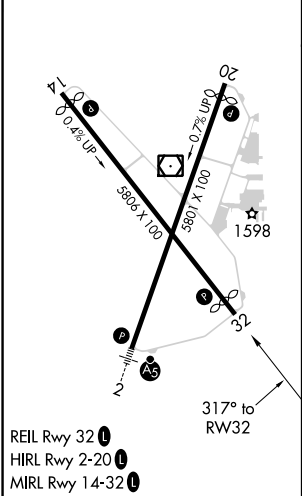
NORFOLK RGNL/KARL STEFAN MEMORIAL FIELD (OFK)



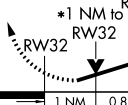

RNP APCH.	MISSED APPROACH: Climb to 3900 direct ADUWU and hold.
-----------	---

ASOS 119.025	MINNEAPOLIS CENTER 125.025 235.625	UNICOM 122.7 (CTAF) 0
------------------------	--	---------------------------------



ELEV 1573	D	TDZE 1560
------------------	----------	------------------



3900	ADUWU	VGSI and RNAV glidepath not coincident (VGSI Angle 3.50/TCH 49).		4 NM Holding Pattern
				
*LNAV only				
				
RW32		CIWYY 1.8 NM to RW32	CERHI 3200	AYEDU
1 NM		0.8	3.2 NM	5.9 NM
2180*		3200	137° → 6000 ← 317° 3900	GP 3.00° TCH 49
CATEGORY	A	B	C	D
LPV DA	1858-1 298 (300-1)			
LNAV/ VNAV DA	2019-1 ³ / ₈ 459 (500-1 ³ / ₈)			
LNAV MDA	1980-1 420 (500-1)		1980-1 ¹ / ₈ 420 (500-1 ¹ / ₈)	
 CIRCLING	2060-1 487 (500-1)	2100-1 527 (600-1)	2260-2 687 (700-2)	2360-2 ¹ / ₂ 787 (800-2 ¹ / ₂)

RNAV (GPS) RWY 32