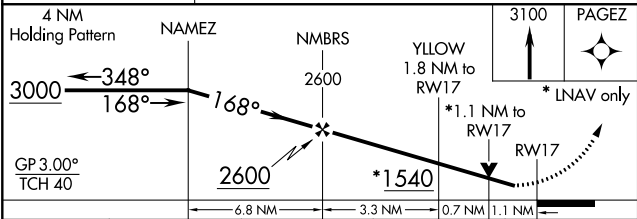
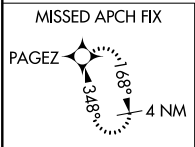
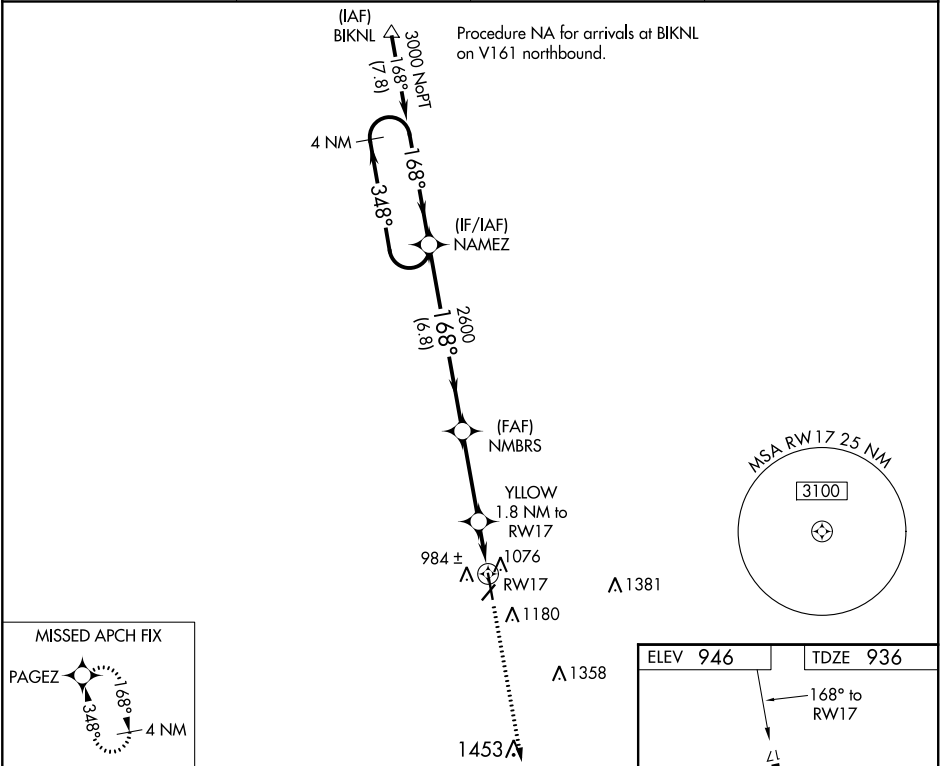


WAAS CH 61130 W17A	APP CRS 168°	Rwy Idg TDZE Apt Elev	6100 936 946
--	------------------------	-----------------------------	---

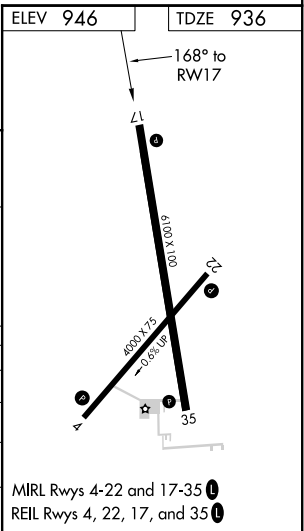
RNAV (GPS) RWY 17
ATKINSON MUNI (PTS)

<p>⚠ For uncompensated Baro-VNAV systems, LNAV/VNAV NA below -16°C (4°F) or above 54°C (130°F). DME/DME RNP-0.3 NA. Rwy 17 helicopter visibility reduction below ¾ SM NA.</p>	<p>MISSED APPROACH: Climb to 3100 direct PAGEZ and hold.</p>
--	--

AWOS-3 118.775	KANSAS CITY CENTER 128.6 282.325	GCO 121.725	UNICOM 123.0 (CTAF) 0
--------------------------	--	-----------------------	---------------------------------



CATEGORY	A	B	C	D
LPV DA	1216-1	280 (300-1)		
INAV/VNAV DA	1237-1	301 (300-1)		
INAV MDA	1340-1 404 (400-1)	1340-1½ 404 (400-1½)		
CIRCLING	1480-1 534 (600-1)	1520-1½ 574 (600-1½)	1720-2½ 774 (800-2½)	



NC-2, 03 DEC 2020 to 31 DEC 2020

NC-2, 03 DEC 2020 to 31 DEC 2020