

WAAS CH <b>77600</b> <b>W35A</b>	APP CRS <b>348°</b>	Rwy Idg <b>6100</b> TDZE <b>929</b> Apt Elev <b>946</b>
--	------------------------	---

RNAV (GPS) RWY 35

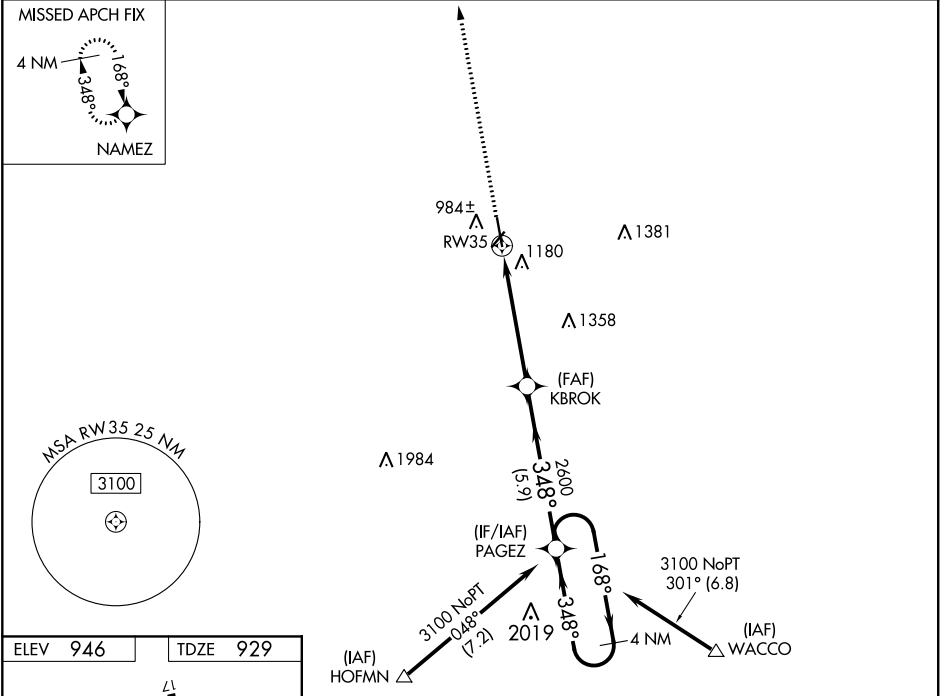
ATKINSON MUNI (PTS)

⚠

For uncompensated Baro-VNAV systems, LNAV/VNAV NA below -16°C (4°F) or above 54°C (130°F). Rwy 35 helicopter visibility reduction below ¾ SM NA. DME/DME RNP-0.3 NA.

MISSED APPROACH: Climb to 3000 direct NAMEZ and hold.

AWOS-3 <b>118.775</b>	KANSAS CITY CENTER <b>128.6 282.325</b>	GCO <b>121.725</b>	UNICOM <b>123.0</b> (CTAF) <b>0</b>
--------------------------	--	-----------------------	--



3000

↑

NAMEZ

✦

VGSI and RNAV glidepath not coincident  
(VGSI Angle 3.00/TCH 20).

PAGEZ

4 NM Holding Pattern

\*LNAV only.

RW35

KBROK

2600

3100

168°

348°

GP 3.00°

TCH 40

\*1.5 NM to RW35

1.5 NM

3.6 NM

5.9 NM

CATEGORY	A	B	C	D
LPV DA	1179-1 250 (300-1)			
LNAV/ VNAV DA	1338-1½ 409 (400-1½)			
LNAV MDA	1440-1 511 (500-1)	1440-1¾ 511 (500-1¾)		
CIRCLING	1480-1 534 (600-1)	1520-1½ 574 (600-1½)	1720-2½ 774 (800-2½)	