

LOC/DME I-MVP 111.55 Chan 52 (Y)	APP CRS 196°	Rwy Idg 7301 TDZE 1320 Apt Elev 1333
--	------------------------	---

ILS or LOC RWY 19L
WICHITA DWIGHT D EISENHOWER NATIONAL (ICT)

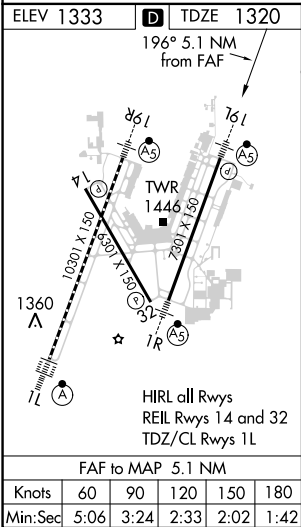
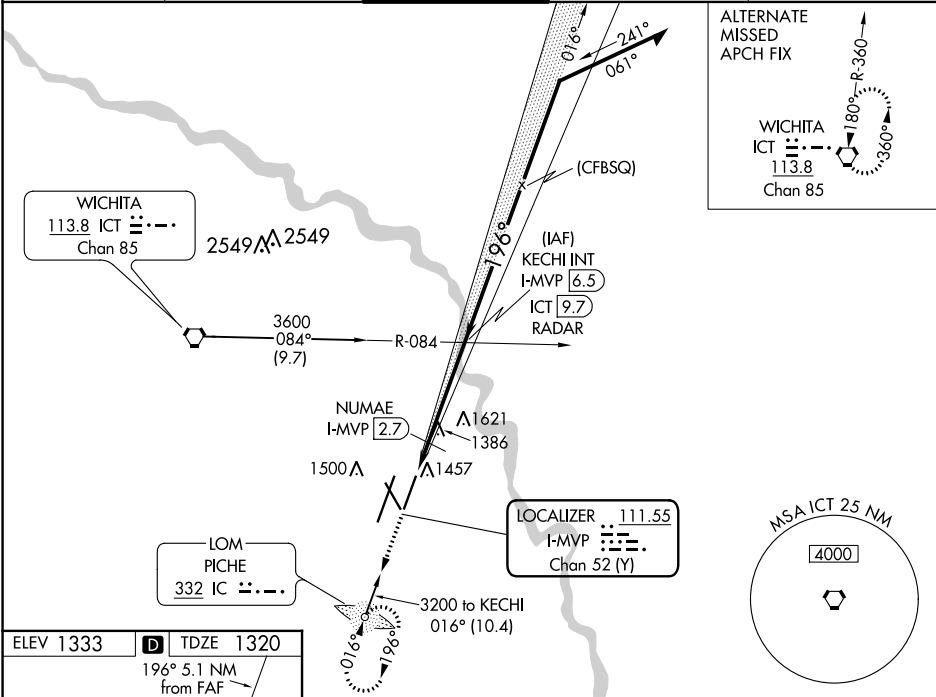
⚠ ADF required. Simultaneous approach authorized with ILS or LOC RWY 19R. For inoperative MALSR, increase S-ILS 19L Cat E visibility to ¾ mile, S-LOC 19L Cat E visibility to 1 ⅜ mile, NUMAE fix minimums: S-LOC 19L Cat C/D/E visibility to 1 mile.



MALSR

AS

MISSED APPROACH: Climb to 3000 direct PICHE LOM and hold.

ATIS 125.15	WICHITA APP CON 126.7 353.5	WICHITA TOWER 118.2 257.8	GND CON 121.9 348.6	CLNC DEL 125.7
-----------------------	---------------------------------------	-------------------------------------	-------------------------------	--------------------------



3000	IC	KECHI INT I-MVP <u>6.5</u> / RADAR				Remain within 15 NM
*LOC only.		NUMAE I-MVP <u>2.7</u>	3000	016°	3200	GS 3.00° TCH 54
		I-MVP <u>1.4</u>	1780*	196°	3000	
		1.3 NM	3.8 NM			
CATEGORY	A	B	C	D	E	
S-ILS 19L	1520-½ 200 (200-½)					
S-LOC 19L	1780-½ 460 (500-½)		1780-⅞ 460 (500-⅞)			
C CIRCLING	1800-1 467 (500-1)		1980-1¾ 647 (700-1¾)	1980-2 647 (700-2)	2000-2¼ 667 (700-2¼)	
NUMAE FIX MINIMUMS (DME REQUIRED)						
S-LOC 19L	1700-½ 380 (400-½)		1700-⅝ 380 (400-⅝)			
C CIRCLING	1800-1 467 (500-1)		1980-1¾ 647 (700-1¾)	1980-2 647 (700-2)	2000-2¼ 667 (700-2¼)	