

APP CRS	Rwy Idg	10301
016°	TDZE	1314
	Apt Elev	1333

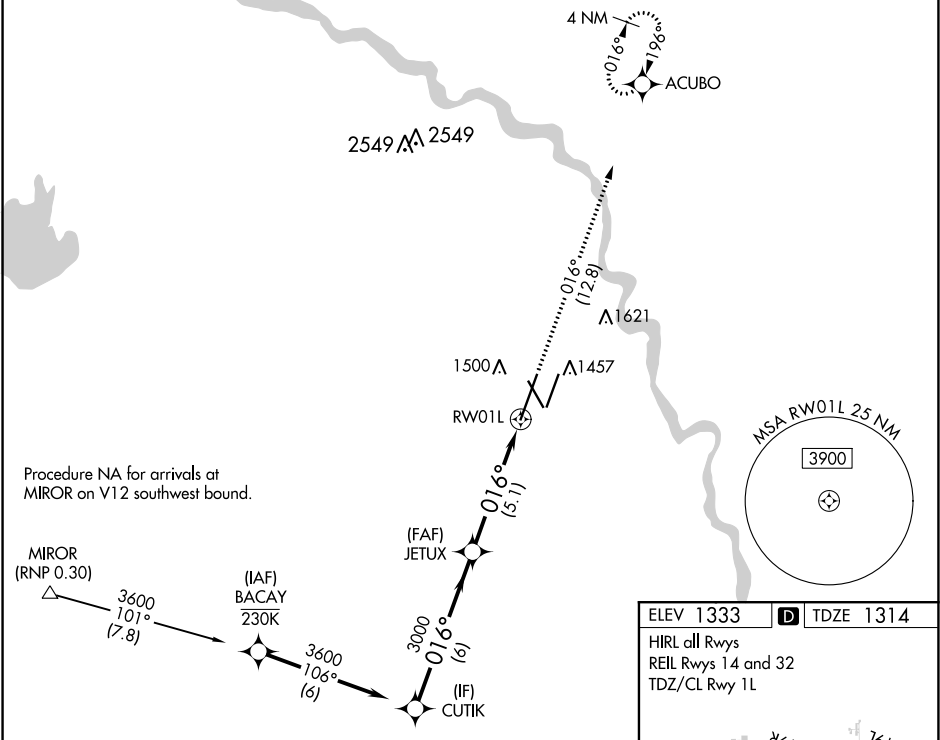
RNAV (RNP) Z RWY 1L
WICHITA DWIGHT D EISENHOWER NATIONAL (ICT)

For uncompensated Baro-VNAV systems, procedure NA below -15°C (5°F) or above 54°C (130°F). For inoperative ALSF, increase RNP 0.15 all Cats visibility to RVR 5000 and RNP 0.30 all Cats visibility to RVR 6000. GPS required. Simultaneous approach authorized with ILS or LOC RWY 1R. Use of FD or AP providing RNAV track guidance required during simultaneous operations.

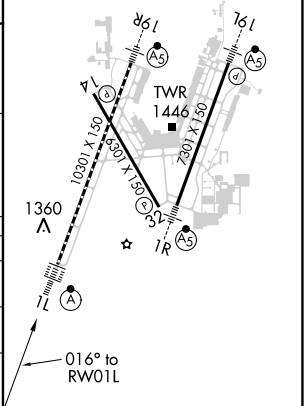
ALSF-2

MISSED APPROACH:
Climb to 4200 on track 016° to ACUBO and hold.

ATIS 125.15	WICHITA APP CON 126.7 353.5	WICHITA TOWER 118.2 257.8	GND CON 121.9 348.6	CLNC DEL 125.7
----------------	--------------------------------	------------------------------	------------------------	-------------------



ELEV 1333	TDZE 1314
HIRL all Rwy's	
REIL Rwy's 14 and 32	
TDZ/CL Rwy 1L	



CATEGORY	A	B	C	D
RNP 0.15 DA	1626/27 312 (300-5%)			
RNP 0.30 DA	1676/35 362 (400-5%)			
AUTHORIZATION REQUIRED				

NC-2, 03 DEC 2020 to 31 DEC 2020

NC-2, 03 DEC 2020 to 31 DEC 2020