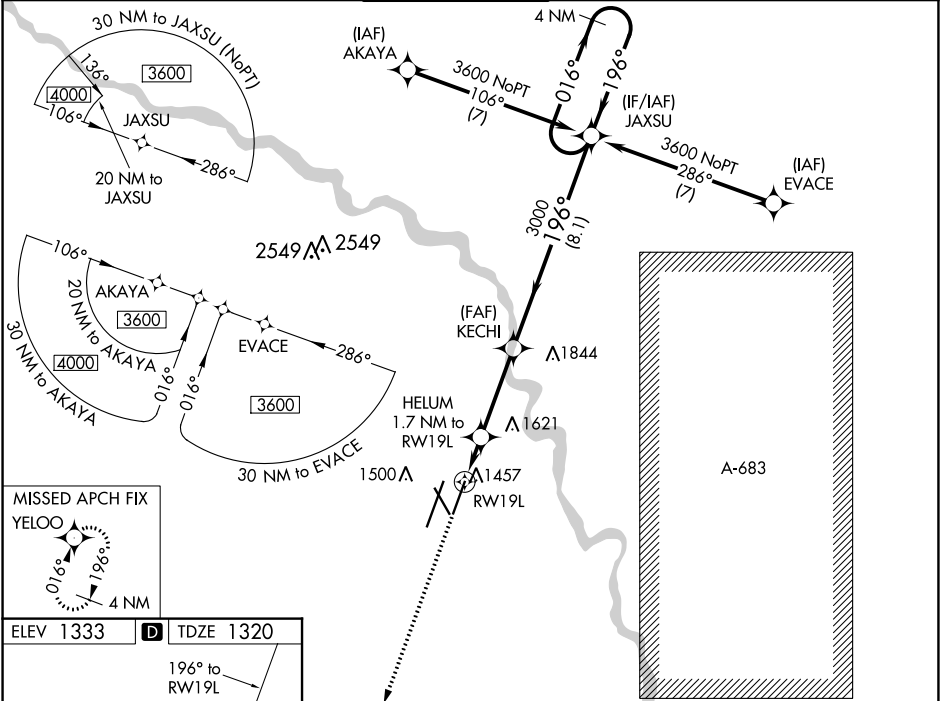


WAAS CH <b>49119</b> <b>W19B</b>	APP CRS <b>196°</b>	Rwy Idg TDZE Apt Elev	<b>7301</b> <b>1320</b> <b>1333</b>
--	------------------------	-----------------------------	---

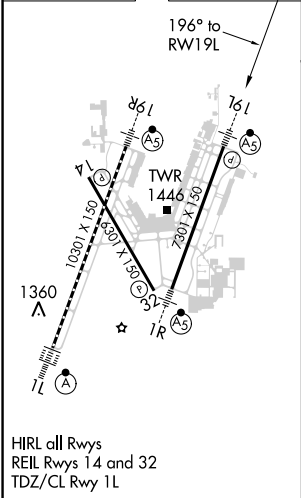
RNAV (GPS) Y RWY 19L  
WICHITA DWIGHT D EISENHOWER NATIONAL (ICT)

RNP APCH. ▼ For uncompensated Baro-VNAV systems, LNAV/VNAV NA below -15°C (5°F) or above 54°C (130°F). Simultaneous approach authorized with ILS or LOC RWY 19R. LNAV procedure NA during simultaneous operations. Use of FD or AP providing RNAV track guidance required during simultaneous operations.	MALSR AS	MISSED APPROACH: Climb to 3600 direct YELOO and hold.
--	-------------	--

ATIS <b>125.15</b>	WICHITA APP CON <b>126.7 353.5</b>	WICHITA TOWER <b>118.2 257.8</b>	GND CON <b>121.9 348.6</b>	CLNC DEL <b>125.7</b>
-----------------------	---------------------------------------	-------------------------------------	-------------------------------	--------------------------



ELEV 1333	<b>D</b>	TDZE 1320
-----------	----------	-----------



3600	YELOO				
*LNAV only.		GP 3.00° TCH 54			
CATEGORY		A	B	C	D
LPV DA		1520-1/2		200 (200-1/2)	
LNAV/ VNAV DA		1747-3/4		427 (500-3/4)	
LNAV MDA		1780-1/2 460 (500-1/2)		1780-7/8 460 (500-7/8)	
<b>C</b> CIRCLING		1800-1 467 (500-1)		1980-13/4 647 (700-13/4)	1980-2 647 (700-2)