

WAAS CH 63019 W19A	APP CRS 196°	Rwy Idg 10301 TDZE 1330 Apt Elev 1333
--	------------------------	--

RNAV (GPS) Y RWY 19R

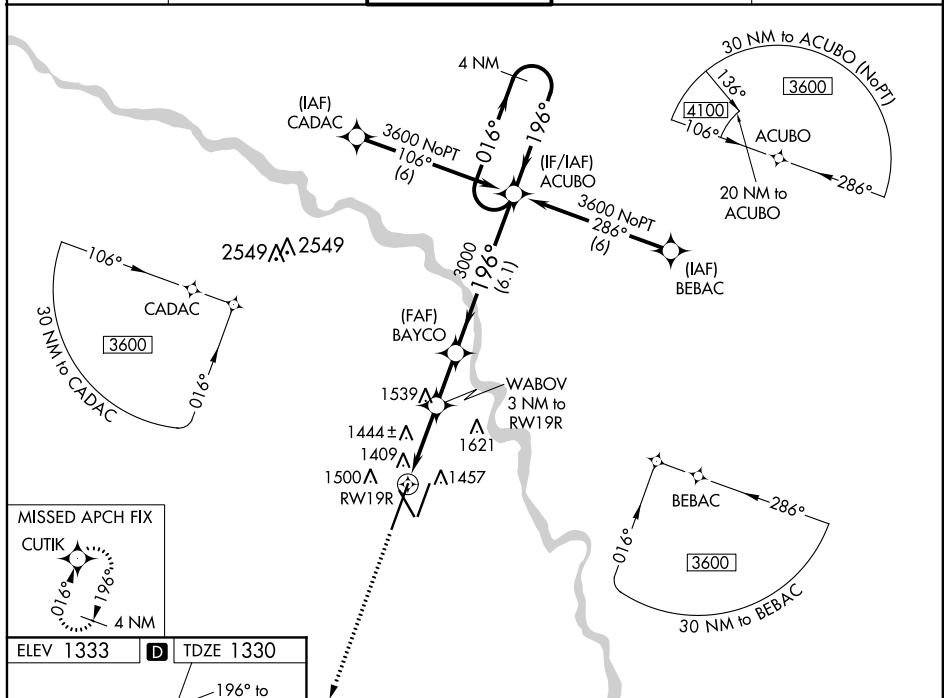
WICHITA DWIGHT D EISENHOWER NATIONAL (ICT)

T For uncompensated Baro-VNAV systems, LNAV/VNAV NA below -15°C (5°F) or above 54°C (130°F). DME/DME RNP-0.3 NA. For inoperative MALSR, increase LNAV Cat C/D visibility to RVR 6000. # RVR 1800 authorized with use of FD or AP or HUD to DA.

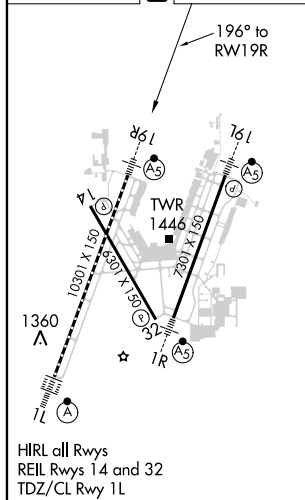


MISSED APPROACH: Climb to 3600 direct CUTIK and hold.

ATIS 125.15	WICHITA APP CON 126.7 353.5	WICHITA TOWER 118.2 257.8	GND CON 121.9 348.6	CLNC DEL 125.7
----------------	--------------------------------	------------------------------	------------------------	-------------------



ELEV 1333	D	TDZE 1330
-----------	----------	-----------



***LNAV only.**

RW19R

WABOV
3 NM to RW19R

BAYCO
3000

ACUBO
4 NM Holding Pattern

196°

016° →

← 196°

3600

GP 3.00°
TCH 52

1.1 NM

1.9 NM

2 NM

6.1 NM

2340*

CATEGORY	A	B	C	D
LPV DA #	1530/24 200 (200-½)			
LNAV/VNAV DA	1742/45 412 (500-¾)			
LNAV MDA	1740/24 410 (500-½)	1740/40 410 (500-¾)		
C CIRCLING	1800-1 467 (500-1)	1980-1¾ 647 (700-1¾)	1980-2 647 (700-2)	