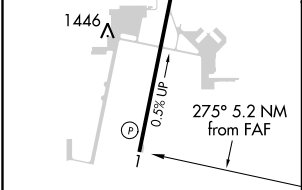
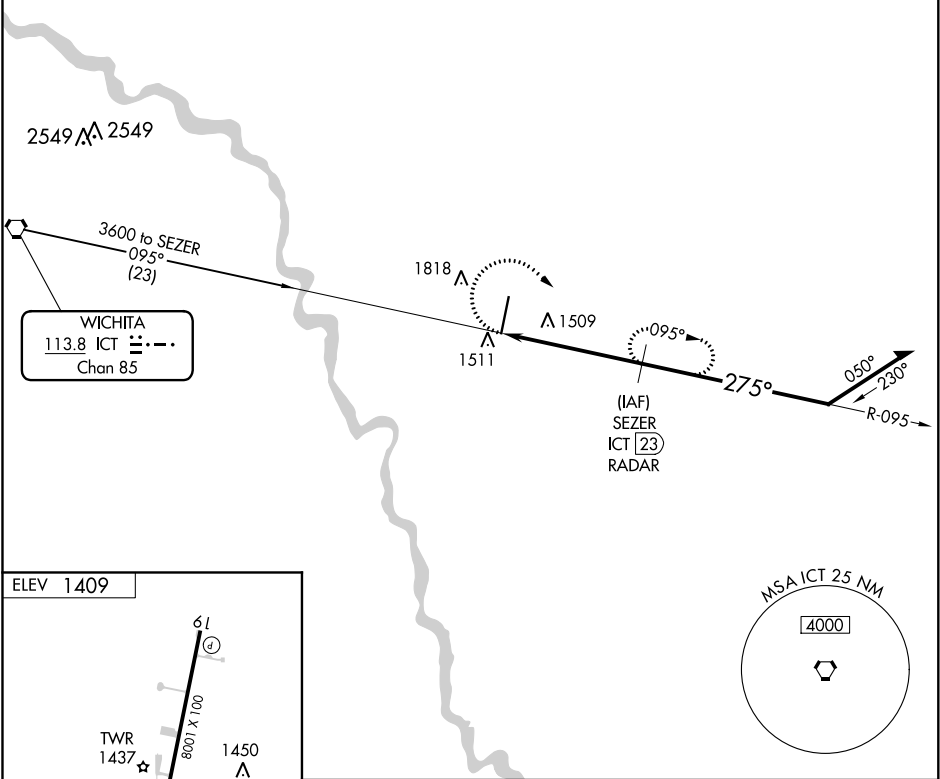


VORTAC ICT 113.8 Chan 85	APP CRS 275°	Rwy Idg TDZE Apt Elev 1409	N/A N/A 1409
--	------------------------	--	---

VOR-B
BEECH FACTORY (B/E/C)

<div><div><div>▼</div><div>▲ NA</div></div><div>Obtain local altimeter setting on CTAF; when not received, use Wichita Dwight D Eisenhower National altimeter setting and increase all MDA 40 feet and increase Cat C and D visibility ¼ mile.</div></div>		MISSED APPROACH: Climbing right turn to 3000 on ICT VORTAC R-095 to SEZER/ICT 23 DME/RADAR and hold.			
AWOS-3PT 119.45	WICHITA APP CON 134.8 269.1	BEECH TOWER ★ 126.8 (CTAF) 0 313.6	GND CON 121.7	CLNC DEL 125.0 (When tower closed)	UNICOM 122.95

RADAR or DME REQUIRED



MIRL Rwy 1-19 REIL Rwys 1 and 19						3000 SEZER ICT R-095		SEZER ICT 23 RADAR		Remain within 10 NM	
FAF to MAP 5.2 NM						ICT 17.8		2900		3000	
CATEGORY						A		B		C	
Knots						1840-1		2120-1		2120-2	
Min:Sec						431 (500-1)		711 (800-1)		711 (800-2)	
CIRCLING						1840-1		2120-1		2120-2 ¼	
						431 (500-1)		711 (800-1)		711 (800-2 ¼)	