

WAAS CH <b>65612</b> <b>W14A</b>	APP CRS <b>143°</b>	Rwy Idg <b>5500</b> TDZE <b>1961</b> Apt Elev <b>1961</b>
--	------------------------	---

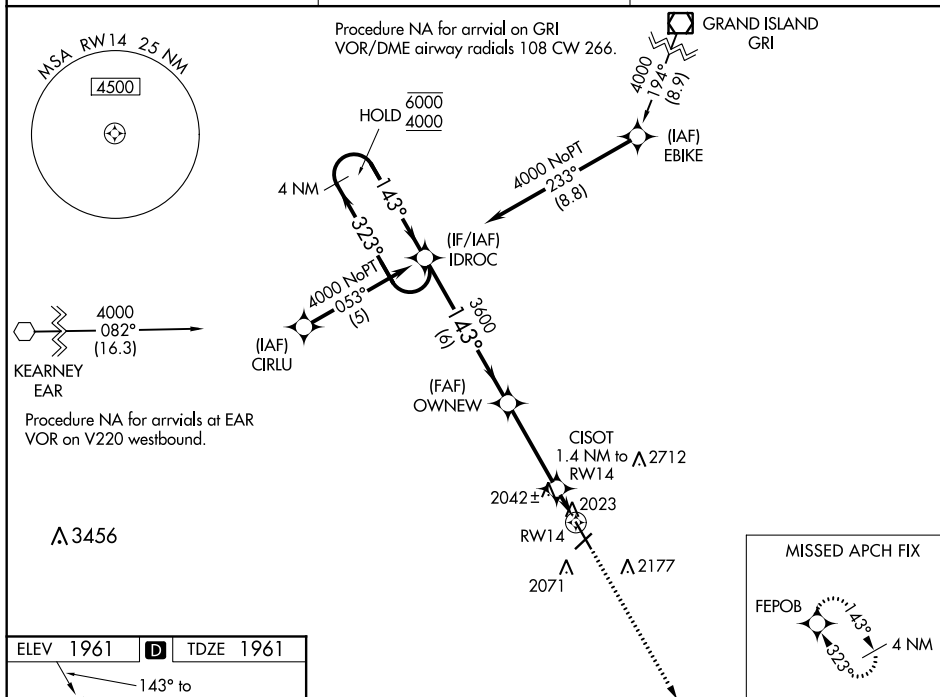
RNAV (GPS) RWY 14  
HASTINGS MUNI (HSI)

RNP APCH.

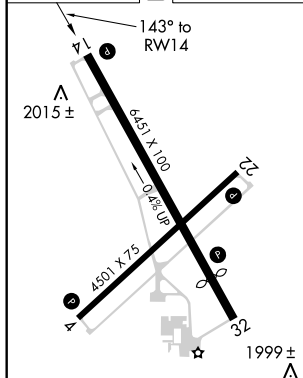
**T** Rwy 14 helicopter visibility reduction below  $\frac{3}{4}$  SM NA. For uncompensated Baro-VNAV systems, procedure NA below -18°C or above 54°C. Circling NA for Cat D east of Rwy 14-32.

**MISSED APPROACH:** Climb to 4000 direct FEPOB and hold.

ASOS <b>120.525</b>	MINNEAPOLIS CENTER <b>119.4 278.8</b>	UNICOM <b>122.8 (CTAF) 0</b>
------------------------	--	---------------------------------



ELEV 1961	<b>D</b>	TDZE 1961
-----------	----------	-----------

MIRL Rwyys 4-22 and 14-32 **L**

REIL Rwy 14 and 32 (L)

HASTINGS, NEBRASKA

Orig-D 18JUN20

40°36'N-98°26'W

HASTINGS MUNI (HST)

RNAV (GPS) RWY 14

NC-2, 03 DEC 2020 to 31 DEC 2020

The diagram illustrates the VOR/DME station at ONEW (Oneworld). It shows two holding patterns: a 4 NM Holding Pattern (GP 3.00° TCH 45) and a 4000 FEPOB pattern. The GP 3.00° TCH 45 pattern has a radius of 4000 feet and a heading of 323°. The 4000 FEPOB pattern has a radius of 4000 feet and a heading of 143°. The DME distance from the station to the holding pattern is 3600 feet. The distance from the station to the 4000 FEPOB pattern is 2440 feet. The distance from the station to the 4000 FEPOB pattern is also indicated as 1.4 NM.