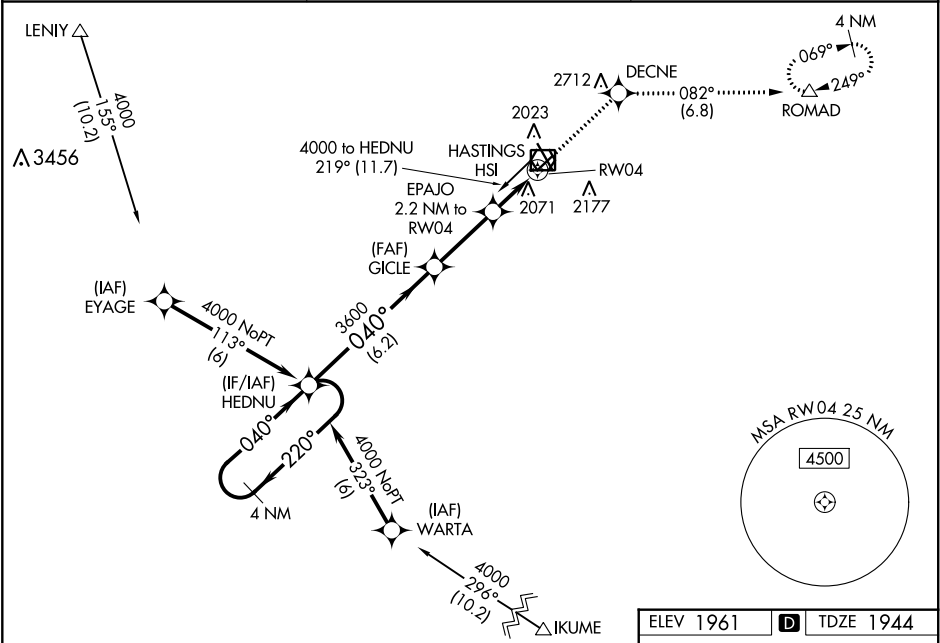


WAAS CH <b>66023</b> <b>W04A</b>	APP CRS <b>040°</b>	Rwy Idg TDZE <b>1944</b> Apt Elev <b>1961</b>
--	------------------------	---

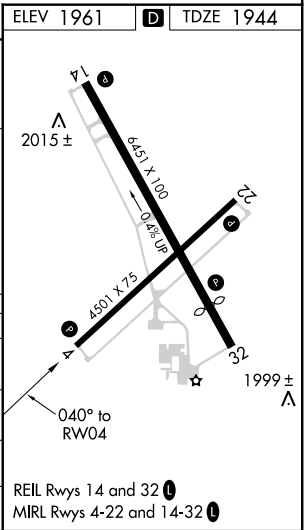
**RNAV (GPS) RWY 4**  
HASTINGS MUNI (HSI)

<p><b>⚠</b> For uncompensated Baro-VNAV systems, LNAV/VNAV NA below -18°C (0°F) or above 54°C (130°F). DME/DME RNP-0.3 NA. When local altimeter setting not received, use Grand Island altimeter setting and increase all DAs/MDAs 80 feet, and visibility Circling Cat C ¼ SM. Baro-VNAV and VDP NA when using Grand Island altimeter setting.</p>	<p><b>MISSED APPROACH:</b> Climb to 4000 direct DECNE and on track 082° to ROMAD and hold.</p>
---	--

ASOS <b>120.525</b>	MINNEAPOLIS CENTER <b>119.4 278.8</b>	UNICOM <b>122.8 (CTAF)</b> <b>⓪</b>
------------------------	--	--



4 NM Holding Pattern		HEDNU	4000 ↑		DECNE ✦	tr 082°	ROMAD △
4000 ←220° 040°→		GICLE 3600	EPAJO 2.2 NM to RW04		*LNAV only.		
GP 3.00° TCH 40		3600	*1.3 NM to RW04		RW04		
		6.2 NM	2.9 NM		0.9		1.3
		*2680					
CATEGORY	A	B	C	D			
LPV DA	2194-1 250 (300-1)		NA				
LNAV/ VNAV	2267-1½ 323 (400-1½)		NA				
LNAV MDA	2380-1 436 (500-1)		2380-1¾ 436 (500-1¾)		NA		
CIRCLING	2380-1 419 (500-1)	2540-1 579 (600-1)	2540-1½ 579 (600-1½)		NA		



NC-2, 03 DEC 2020 to 31 DEC 2020

NC-2, 03 DEC 2020 to 31 DEC 2020