

WAAS CH 53319 W21A	APP CRS 216°	Rwy Idg TDZE Apt Elev	7000 1048 1066
--	------------------------	-----------------------------	---

RNAV (GPS) RWY 21

MANHATTAN RGNL (MHK)

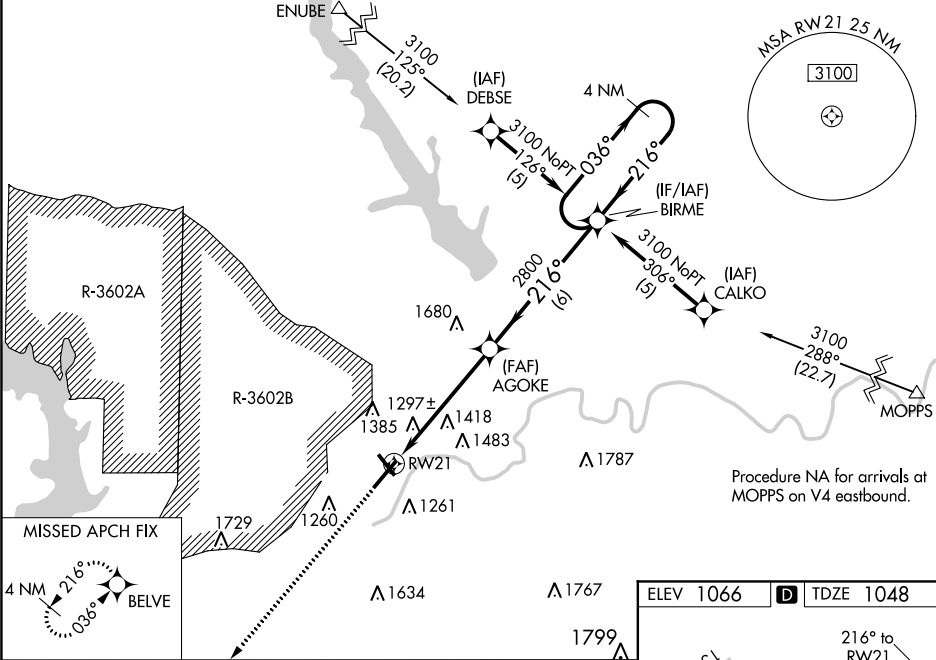
⚠

⚠

Circling NA west of Rwy 3-21. Baro-VNAV NA when using Marshall AAF altimeter setting. For uncompensated Baro-VNAV systems, LNAV/VNAV NA below -17°C (2°F) or above 46°C (114°F). DME/DME RNP-0.3 NA. When local altimeter setting not received, use Marshall AAF altimeter setting: increase LPV DA to 1264 feet, LNAV/VNAV DA to 1718 feet; increase all MDAs 20 feet and visibility Cat C ½ SM.

MISSED APPROACH: Climb to 3800 direct BELVE and hold.

ASOS 119.075	MARSHALL GCA* 121.25 254.35	MANHATTAN TOWER* 118.55 (CTAF) 0	GND CON 121.85
------------------------	---------------------------------------	--	--------------------------



3800

BELVE

VGSI and RNAV glidepath not coincident (VGSI angle 3.00/TCH 47).

AGROKE

BIRME

2800

2800

216°

036°

3100

4 NM

Holding Pattern

GP 3.00°

TCH 50

5.3 NM

6 NM

CATEGORY	A	B	C	D
LPV DA	1248-¾ 200 (200-¾)			
LNAV/VNAV DA	1702-2½ 654 (700-2½)			
LNAV MDA	1720-1	672 (700-1)	1720-1½ 672 (700-1½)	1720-2 672 (700-2)
CIRCLING	1680-1 614 (700-1)	1700-1 634 (700-1)	1700-1½ 634 (700-1½)	1780-2¼ 714 (800-2¼)

