

WAAS CH 60910 W14A	APP CRS 142°	Rwy Idg TDZE 1447 Apt Elev 1447
--	------------------------	---

RNAV (GPS) RWY 14

COLUMBUS MUNI (OLU)

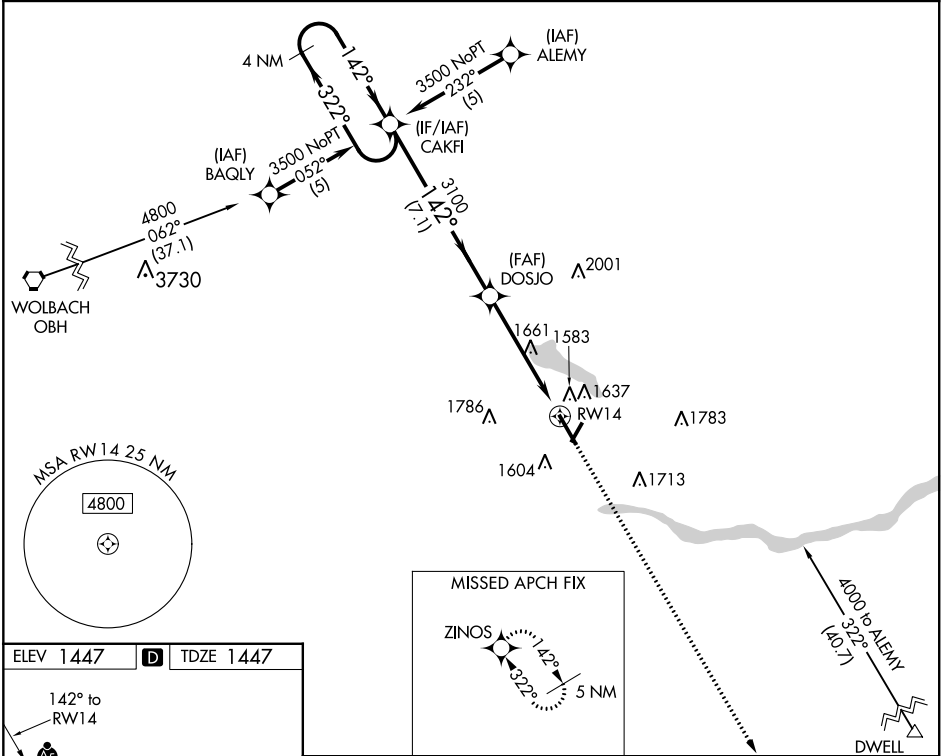
RNP APCH.

For uncompensated Baro-VNAV systems, LNAV/VNAV NA below -17°C (2°F) or above 54°C (130°F). Circling Rwy 2, 20 NA. For inoperative ALS increase LPV all Cats visibility to 1 SM.

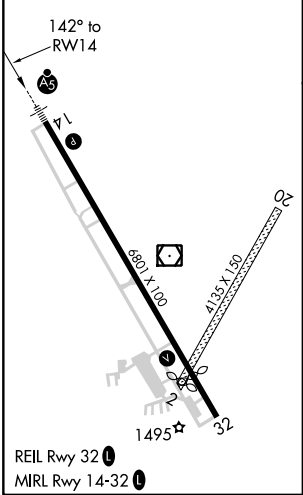
MALSR

MISSED APPROACH:
Climb to 4000 direct ZINOS and hold.

AWOS-3PT 125.525	MINNEAPOLIS CENTER 128.75 346.3	UNICOM 123.05 (CTAF) 0
----------------------------	---	----------------------------------



ELEV 1447	D	TDZE 1447
-----------	---	-----------



4 NM Holding Pattern				4000	ZINOS
3500 ← 322° 142° →				↑	✧
GP 3.00° TCH 40				*1.4 NM to RW14	*LNAV only
3100				RW14	
7.1 NM		3.6 NM		1.4	
CATEGORY	A	B	C	D	
LPV DA	1750-½ 303 (400-½)				
LNAV/VNAV DA	1840-1 393 (400-1)				
LNAV MDA	1920-½ 473 (500-½)	1920-¾ 473 (500-¾)	1920-1 473 (500-1)	1920-1 473 (500-1)	
CIRCLING	2000-1 553 (600-1)	2000-1½ 553 (600-1½)	2040-2 593 (600-2)	2040-2 593 (600-2)	