

LOC/DME I-MCK 110.95 Chan 46 (Y)	APP CRS 123°	Rwy Idg 5698 TDZE 2583 Apt Elev 2583
--	------------------------	---

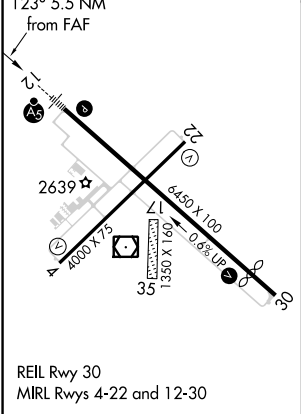
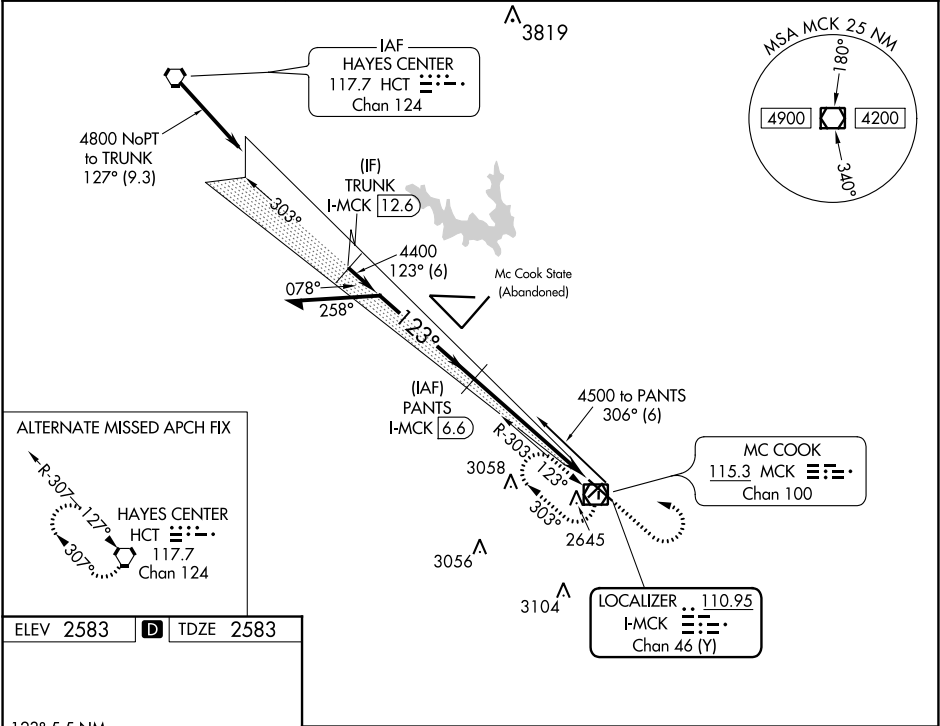
ILS or LOC/DME RWY 12
MC COOK BEN NELSON RGNL (MCK)

⚠ Circling NA to Rwy 17 and 35. When local altimeter setting not received, use Imperial Muni altimeter setting and increase DA 213 feet and S-ILS 12 all visibilities ½ mile; increase all MDAs 220 feet and S-LOC 12 and Circling visibilities Cats A and B ¼ mile, Cat C 1 mile. VDP NA when using Imperial Muni altimeter setting. For inoperative MALSR, when using Imperial Muni altimeter setting increase S-ILS 12 all visibilities to 1½, and S-LOC 12 Cat A visibility to 1.

MALSR

MISSED APPROACH:
Climb to 4500 then climbing left turn to 5000 direct MCK VOR/DME and hold.

ASOS 119.025	DENVER CENTER 132.7 226.675	UNICOM 122.8 (CTAF) 0
------------------------	---------------------------------------	--



<div>Remain within 10 NM</div> <div><div><div><div>PANTS I-MCK 6.6</div><div>4400</div><div>303°</div><div>123°</div><div>4400</div><div>GS 3.00° TCH 39</div></div><div><div>4400</div><div>3.7 NM</div><div>1.8 NM</div></div></div><div><div><div>4500</div><div>5000</div><div>MCK</div></div><div><div>I-MCK 2.9</div><div>I-MCK 1.1</div></div></div></div>				
CATEGORY	A	B	C	D
S-ILS 12	2783-½ 200 (200-½)			NA
S-LOC 12	3180-½ 597 (600-½)		3180-1 597 (600-1)	NA
CIRCLING	3180-1 597 (600-1)		3180-1½ 597 (600-1½)	NA

NC-2, 03 DEC 2020 to 31 DEC 2020

NC-2, 03 DEC 2020 to 31 DEC 2020