

WAAS CH 56218 W30A	APP CRS 304°	Rwy Idg 5698 TDZE 2558 Apt Elev 2583
--	------------------------	---

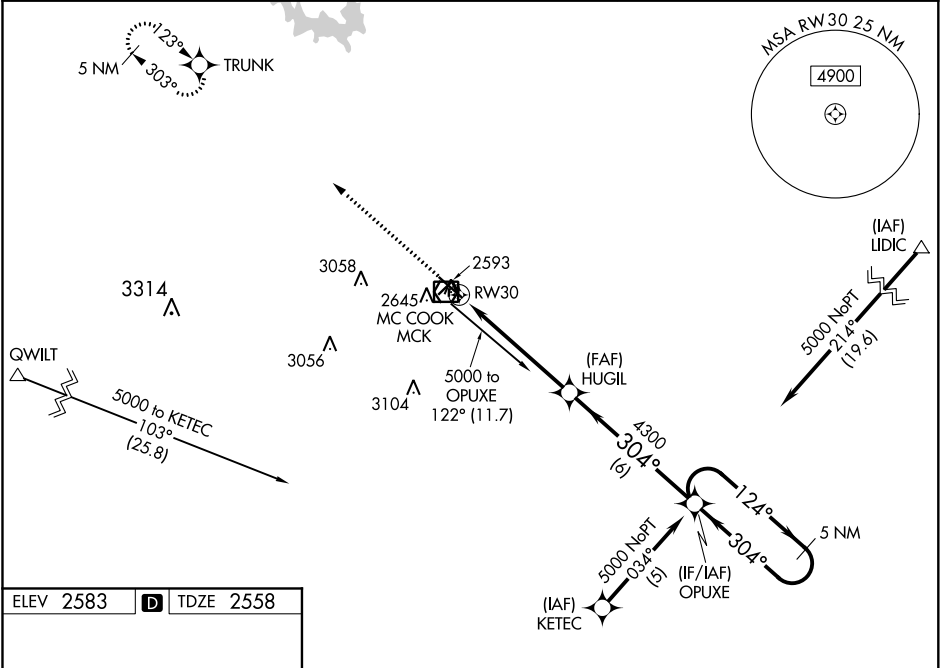
RNAV (GPS) RWY 30

MC COOK BEN NELSON RGNL (MCK)

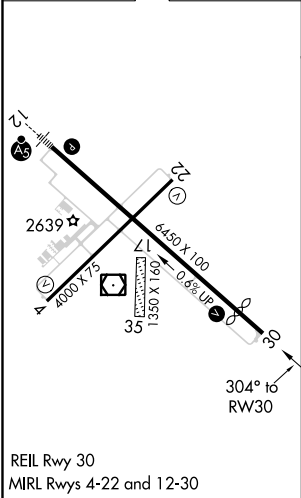
DME/DME RNP-0.3 NA. When local altimeter setting not received, use Imperial Muni altimeter setting: increase LPV all Cats DA to 3023 feet, LNAV/VNAV all Cats DA to 3079 feet and LPV all Cats visibility ½ mile and LNAV/VNAV all Cats ⅔ mile; increase all MDA 220 feet and LNAV Cat C visibility ⅔ mile and Circling Cat C ½ mile. Baro-VNAV and VDP NA when using Imperial Muni altimeter setting. Circling NA to Rwy 17 and 35. For uncompensated Baro-VNAV systems, LNAV/VNAV NA below -20°C (4°F) or above 27°C (80°F).

MISSED APPROACH:
Climb to 5000 direct TRUNK and hold.

ASOS 119.025	DENVER CENTER 132.7 226.675	UNICOM 122.8 (CTAF) 0
------------------------	---------------------------------------	---------------------------------



ELEV 2583	D	TDZE 2558
-----------	----------	-----------



<div>5000 ↑</div>		<div>TRUNK ✦</div>		<div>OPUXE</div>		<div>5 NM Holding Pattern</div>	
*LNAV only.		*1.2 NM to RW30		HUGIL		124°→ ←304° 5000	
<div>RW30</div>		<div>4300</div>		304°		GP 3.00° TCH 44	
1.2		4.1 NM		6 NM			
CATEGORY		A		B		C	
LPV DA		2810-7/8 252 (300-7/8)				NA	
LNAV/ VNAV		2866-1 308 (300-1)				NA	
LNAV MDA		2960-1 402 (400-1)		2960-11/8 402 (400-11/8)		NA	
CIRCLING		3020-1 437 (500-1)		3040-1 457 (500-1)		3040-11/2 457 (500-11/2)	
						NA	