

WAAS CH 78319 W34A	APP CRS 339°	Rwy Idg TDZE Apt Elev	6501 1994 1999
--	------------------------	-----------------------------	---

RNAV (GPS) RWY 34

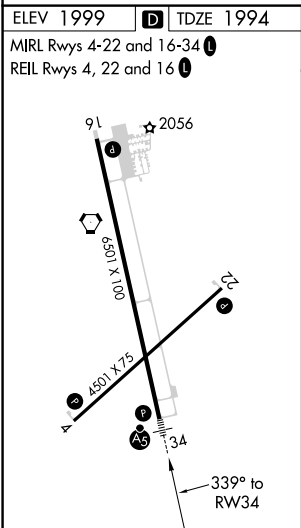
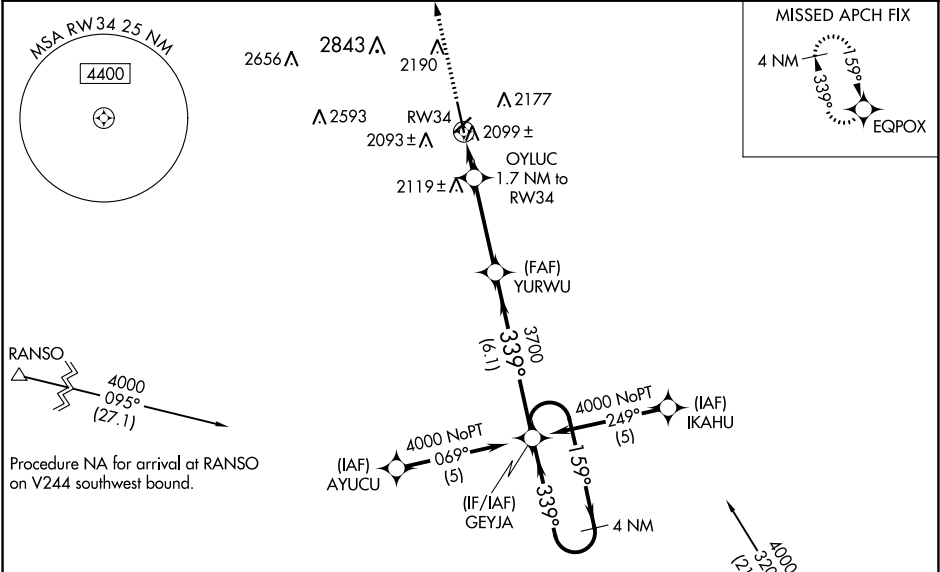
HAYS RGNL (HYS)

For uncompensated Baro-VNAV systems, LNAV/VNAV NA below -18°C (0°F) or above 45°C (113°F). DME/DME RNP-0.3 NA. When local altimeter setting not received, use Russell altimeter setting and increase all DA 69 feet and all MDA 80 feet, increase LNAV/VNAV visibility all Cats ¼ mile and LNAV Cat C visibility ½ mile. For inoperative MALSR, increase LNAV Cat D visibility to 1¼ mile. For inoperative MALSR when using Russell altimeter setting, increase LPV all Cats visibility to 1 mile. VDP and Baro-VNAV NA when using Russell altimeter setting.

MALSR

MISSED APPROACH:
Climb to 4000 direct
EQPOX and hold.

AWOS-3PT 125.525	KANSAS CITY CENTER 124.4 322.4	UNICOM 122.8 (CTAF)
----------------------------	--	-------------------------------



4000	EQPOX	GEYJA	4 NM Holding Pattern	4000
*LNAV only	OYLUC 1.7 NM to RW34	YURWU 3700	159° → 339°	GP 3.00° TCH 45
	*1.1 NM to RW34			
	1.1 NM	0.6	3.5 NM	6.1 NM
CATEGORY	A	B	C	D
LPV DA	2194-½		200 (200-½)	
LNAV/VNAV DA	2496-1¼		502 (500-1¼)	
LNAV MDA	2380-½		386 (400-½)	
CIRCLING	2440-1 441 (500-1)	2480-1 481 (500-1)	2480-1½ 481 (500-1½)	2380-1 386 (400-1) 2560-2 561 (600-2)

NC-2, 03 DEC 2020 to 31 DEC 2020

NC-2, 03 DEC 2020 to 31 DEC 2020