

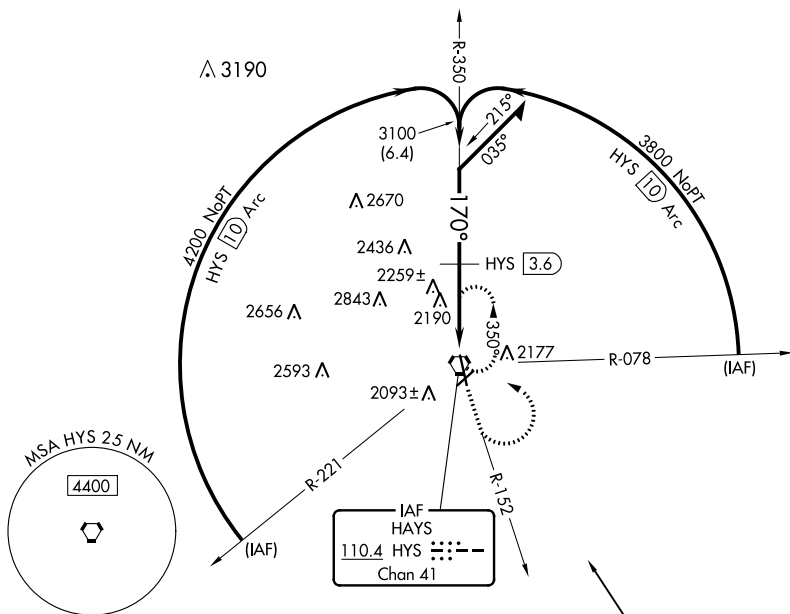
VORTAC HYS <b>110.4</b> Chan <b>41</b>	APP CRS <b>170°</b>	Rwy Idg <b>6501</b> TDZE <b>1999</b> Apt Elev <b>1999</b>
--	------------------------	---

VOR/DME RWY 16  
HAYS RGNL (HYS)

**T** When local altimeter setting not received, use Russell altimeter setting and increase all MDA 80 feet and Circling Cat C visibility ¼ mile. Visibility reduction by helicopters NA.

**MISSED APPROACH:** Climb to 3800 via HYS R-152 then climbing left turn to 3900 direct HYS VORTAC and hold.

AWOS-3PT <b>125.525</b>	KANSAS CITY CENTER <b>124.4 322.4</b>	UNICOM <b>122.8</b> (CTAF) <b>0</b>
----------------------------	--	--



ELEV 1999

TDZE 1999

170° to VORTAC

91

2056

4501 X 100

4501 X 75

34

45

REIL Rwy 4, 22 and 16

MIRL Rwy 4-22 and 16-34

