

LOC I-JZM  
**108.9**

APP CRS  
**329°**

Rwy Idg **5700**  
TDZE **831**  
Apt Elev **833**

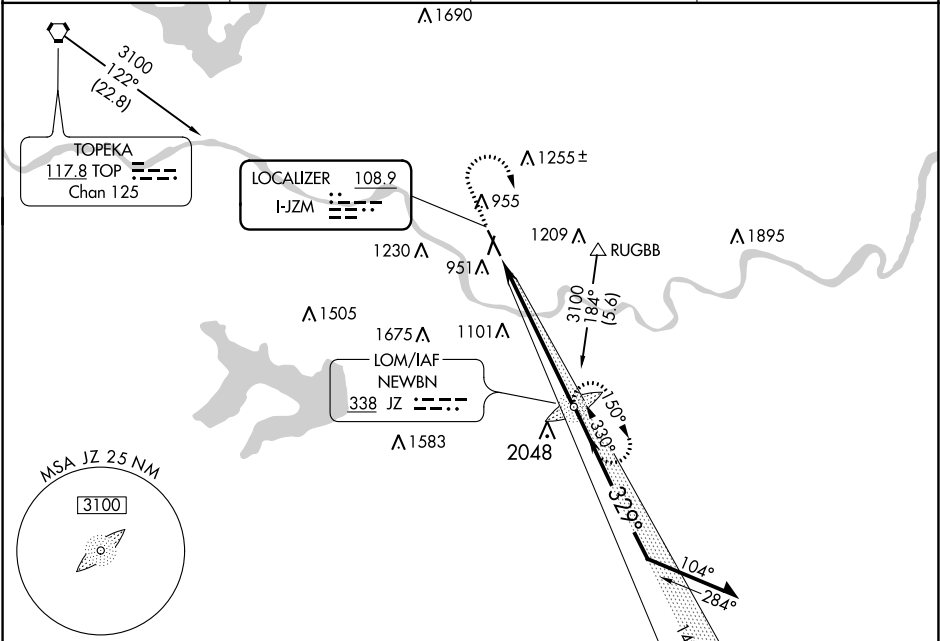
ILS or LOC RWY 33  
LAWRENCE MUNI (LWC)

When local altimeter setting not received, use Philip Billard Muni altimeter setting and increase all DA 52 feet and all MDA 60 feet.

MALSR

MISSED APPROACH: Climb to 2000 then climbing right turn to 3100 direct NEWBN LOM and hold.

ASOS <b>121.225</b>	KANSAS CITY CENTER <b>123.8 343.7</b>	CLNC DEL <b>121.825</b>	UNICOM <b>123.0 (CTAF) 0</b>
------------------------	--	----------------------------	---------------------------------



ELEV **833** TDZE **831**

MIRL Rwy 1-19 and 15-33  
REIL Rwy 1, 15, and 19

329° 6.1 NM from FAF

FAF to MAP 6.1 NM

Knots	60	90	120	150	180
Min:Sec	6:06	4:04	3:03	2:26	2:02

ADF REQUIRED

2000

3100

JZ

VGSI and ILS glidepath not coincident (VGSI Angle 3.00/TCH 52).

2843

149°

3100

329°

2900

GS 3.00° TCH 55

6.1 NM

CATEGORY	A	B	C	D
S-ILS 33	1031-½ 200 (200-½)			NA
S-LOC 33	1260-½ 429 (500-½)	1260-¾ 429 (500-¾)		NA
CIRCLING	1420-1 587 (600-1)	1440-1¾ 607 (700-1¾)		NA