


WAAS CH <b>99436</b> <b>W35A</b>	APP CRS <b>354°</b>	Rwy Idg <b>5506</b> TDZE <b>1155</b> Apt Elev <b>1160</b>
--	------------------------	---

# RNAV (GPS) RWY 35

RNP APCH.

**▼** Baro-VNAV and VDP NA when using Wichita Dwight D Eisenhower National altimeter setting. For uncompensated Baro-VNAV systems, LNAV/VNAV NA below -15°C or above 54°C. **▲** When local altimeter setting not received, use Wichita Dwight D Eisenhower National altimeter setting: increase LPV DA to 1509 feet and all visibilities ¼ SM; increase LNAV/VNAV DA to 1557 feet and all visibilities ¼ SM; increase all MDA 120 feet, LNAV Cat C visibility ⅝ SM and Circling Cat C visibility ¼ SM.

**MISSED APPROACH:**  
Climb to 3600 direct  
ECUWO and hold.

ASOS <b>118.025</b>	KANSAS CITY CENTER <b>127.8 319.1</b>	UNICOM <b>122.8</b> (CTAF) 
------------------------	--	---

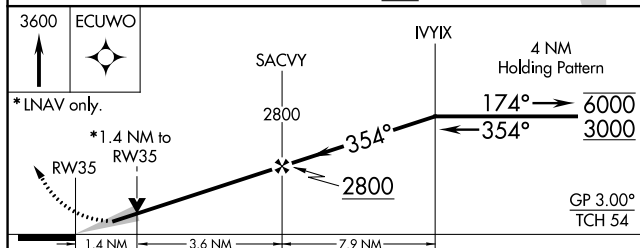
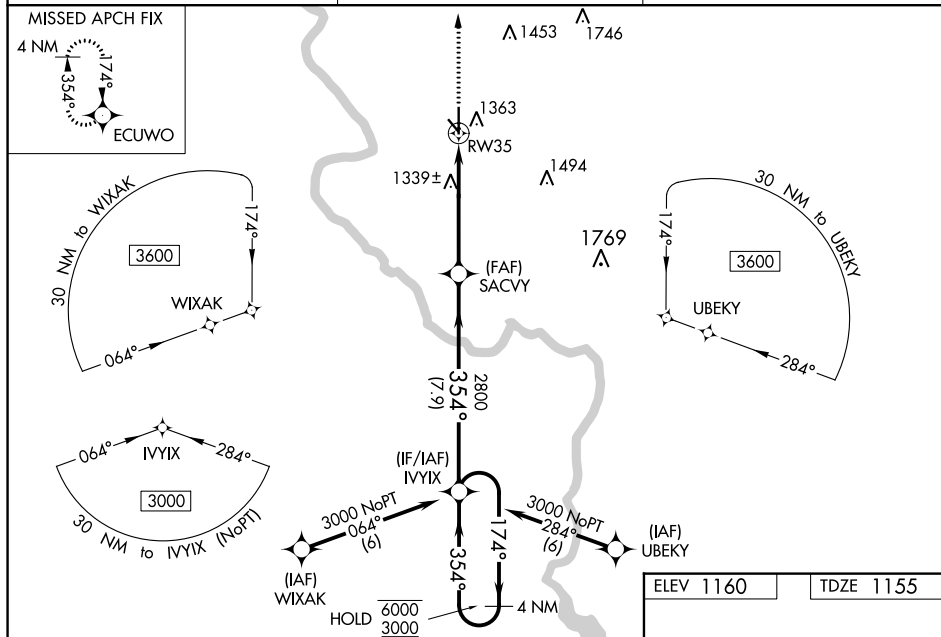
MISSED APCH FIX


4 NM

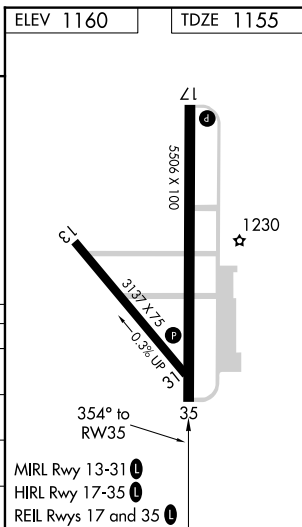
174°

354°

ECUWO



CATEGORY		A	B	C	D
LPV	DA	1405- <sup>3</sup> / <sub>4</sub> 250 (300- <sup>3</sup> / <sub>4</sub> )			NA
LNAV/ VNAV	DA	1453-1 298 (300-1)			NA
LNAV	MDA	1640-1 485 (500-1)	1640-1 <sup>3</sup> / <sub>8</sub> 485 (500-1 <sup>3</sup> / <sub>8</sub> )		NA
 CIRCLING		1680-1 520 (600-1)	1680-1 <sup>1</sup> / <sub>2</sub> 520 (600-1 <sup>1</sup> / <sub>2</sub> )		NA



## RNAV (GPS) RWY 35