

WAAS  
CH **90203**  
**W13A**

APP CRS  
**130°**

Rwy Idg  
TDZE  
Apt Elev  
**4408**  
**2032**  
**2034**

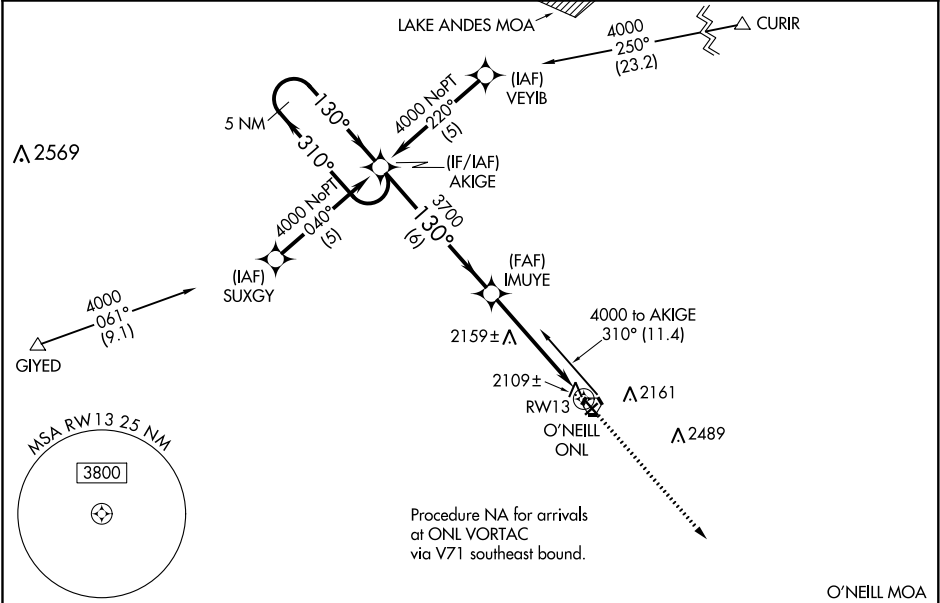
**RNAV (GPS) RWY 13**

THE O'NEILL MUNI-JOHN L BAKER FIELD (ONL)

Baro-VNAV NA when using Evelyn Sharp Field altimeter setting. For uncompensated Baro-VNAV systems, LNAV/VNAV NA below -19°C (-2°F) or above 54°C (130°F). DME/DME RNP-0.3 NA. Helicopter visibility reduction below ¾ SM NA. If local altimeter setting not received, use Evelyn Sharp Field altimeter setting and increase all DAs 126 feet, all MDAs 140 feet. VDP NA when using Evelyn Sharp Field altimeter setting. Night landing: Rwy 4, 22 NA.

MISSED APPROACH:  
Climb to 4000 direct  
AFSIC and hold.

AWOS-3 <b>121.125</b>	MINNEAPOLIS CENTER <b>128.0 257.95</b>	UNICOM <b>122.8 (CTAF) 0</b>
--------------------------	---	---------------------------------



ELEV 2034

TDZE 2032

130° to RW13

4000 X 7.5

3200 X 60

REIL Rws 13 and 31

MIRL Rwy 13-31

5 NM Holding Pattern	AKIGE	IMUYE	4000	AFSIC
4000	310°	130°	3700	
GP 3.00°				
TCH 39				
	6 NM	3.9 NM	1.1 NM	
CATEGORY	A	B	C	D
LPV DA	2308-1	276 (300-1)		NA
LNAV/VNAV DA	2380-1¼	348 (400-1¼)		NA
LNAV MDA	2420-1	388 (400-1)		NA
CIRCLING	2600-1	566 (600-1)	2600-1½ 566 (600-1½)	NA