

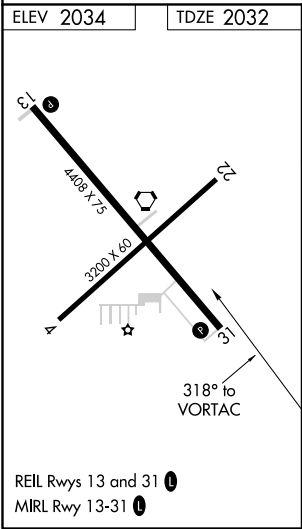
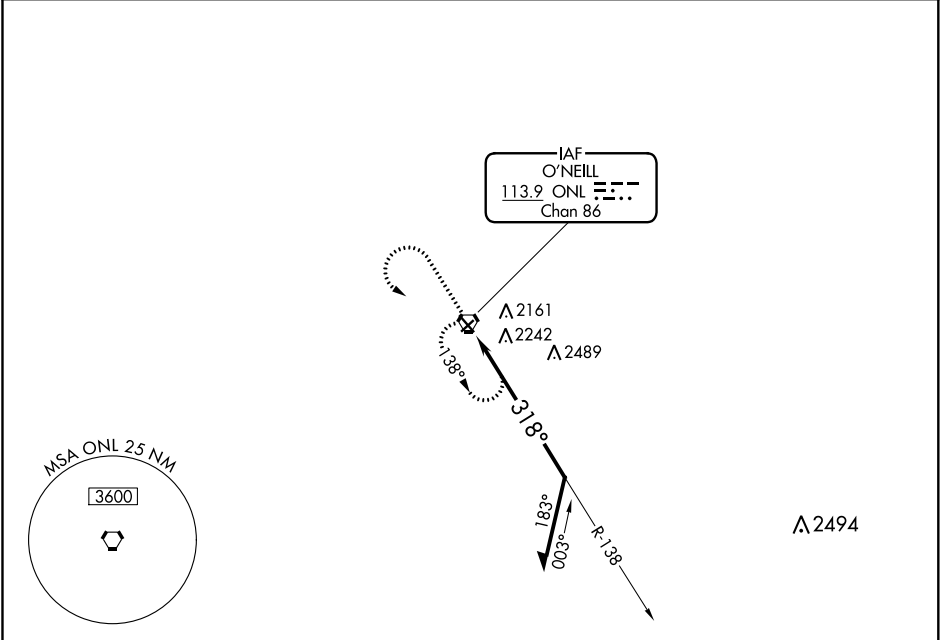
VORTAC ONL 113.9 Chan 86	APP CRS 318°	Rwy Idg TDZE Apt Elev 4408 2032 2034
--	------------------------	--



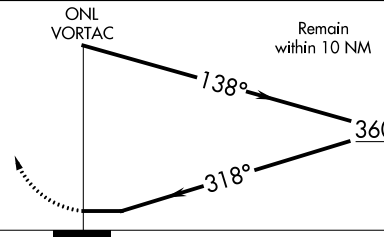
VOR RWY 31

THE O'NEILL MUNI-JOHN L BAKER FIELD (ONL)

 Night landing: Rwy 4, 22 NA.	MISSED APPROACH: Climb to 3600 then left turn direct ONL VORTAC and hold.
--	---

AWOS-3 121.125	MINNEAPOLIS CENTER 128.0 257.95	UNICOM 122.8 (CTAF) 0
--------------------------	---	---------------------------------



<div>3600</div> <div></div>		<div>ONL</div> <div></div>	<div>ONL VORTAC</div> <div></div> <div>Remain within 10 NM</div> <div>3600</div>	
CATEGORY	A	B	C	D
S-31	2560-1	528 (600-1)	2560-1½ 528 (600-1½)	2560-1¾ 528 (600-1¾)
CIRCLING	2600-1	566 (600-1)	2600-1½ 566 (600-1½)	2600-2 566 (600-2)

NC-2, 03 DEC 2020 to 31 DEC 2020

NC-2, 03 DEC 2020 to 31 DEC 2020