

WAAS CH <b>50109</b> <b>W17A</b>	APP CRS <b>174°</b>	Rwy Idg <b>6705</b> TDZE <b>1530</b> Apt Elev <b>1533</b>
--	------------------------	---

RNAV (GPS) RWY 17

NEWTON-CITY-COUNTY (E WK)

RNP APCH.

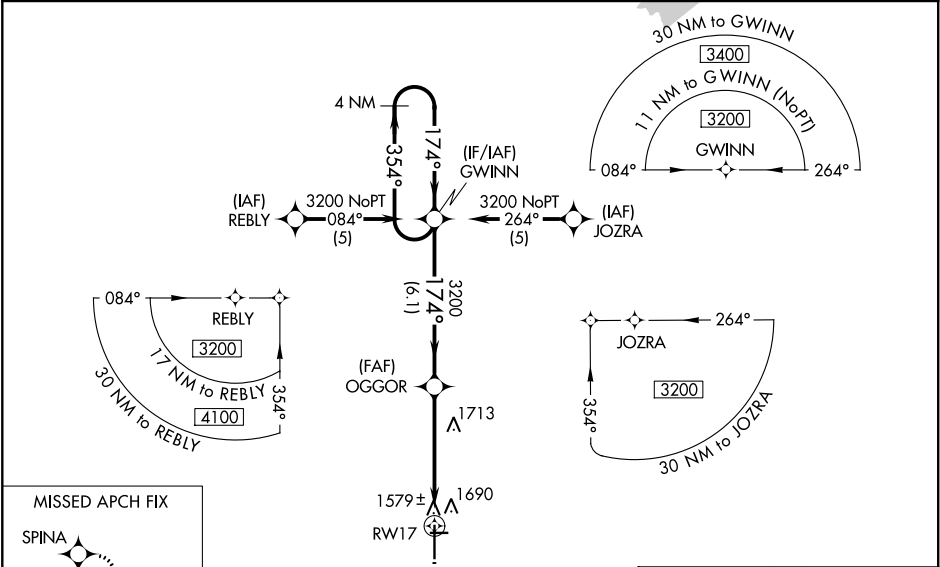
⚠

When local altimeter setting not received, use Wichita Dwight D Eisenhower National altimeter setting: increase LPV DA to 1891 feet and visibility ½ SM; increase all MDAs 100 feet and visibility Cat C and LNAV Cat D ¼ SM. VDP NA when using Wichita Dwight D Eisenhower National altimeter setting. For inop ALS, increase LPV visibility to ¾ SM and LNAV Cat C/D to 1 ¾ SM. For inop ALS when using Wichita Dwight D Eisenhower National altimeter setting, increase LPV visibility to 1 SM. Circling Rwy 8, 26 NA at night.

MALSR

MISSED APPROACH:  
Climb to 3600 direct SPINA and hold.

AWOS-3PT <b>123.875</b>	WICHITA APP CON <b>125.5 306.2</b>	CLNC DEL <b>126.55</b>	UNICOM <b>123.0</b> (CTAF) <b>0</b>
----------------------------	---------------------------------------	---------------------------	--



ELEV 1533		D		TDZE 1530	
174° to RW17					
GP 3.00° TCH 55		*1.4 NM to RW17		*LNAV only.	
6.1 NM		3.6 NM		1.4 NM	
CATEGORY	A	B	C	D	
LPV DA	1791-½ 261 (300-½)				
LNAV/VNAV DA	NA				
LNAV MDA	2020-½ 490 (500-½)		2020-1 490 (500-1)		
CIRCLING	2020-1 487 (500-1)		2020-1½ 487 (500-1½)		2100-2 567 (600-2)

REIL Rws 8, 26, and 35 **0**

HIRL Rwy 17-35 **0**

MIRL Rwy 8-26