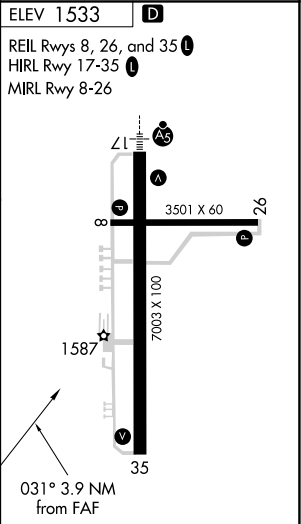
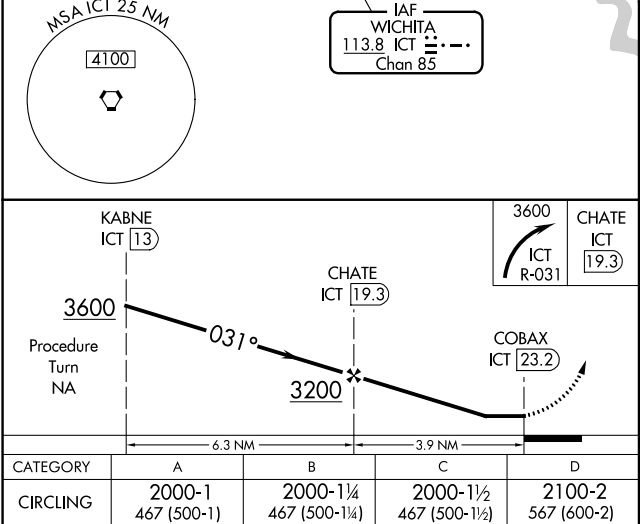
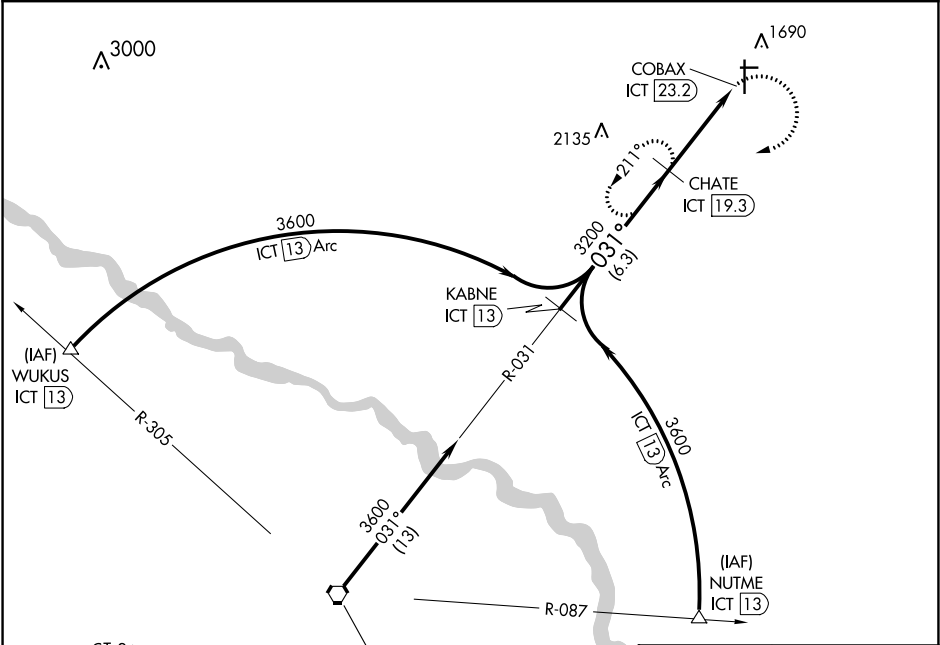


VORTAC ICT 113.8 Chan 85	APP CRS 031°	Rwy Idg TDZE Apt Elev N/A N/A 1533
--	------------------------	--

VOR/DME-A
NEWTON-CITY-COUNTY (E WK)

<p>⚠ Circling Rwy 8, 26 NA at night. When local altimeter setting not received, use Wichita Dwight D Eisenhower National altimeter setting and increase all MDAs 100.</p>	<p>⚠ MISSED APPROACH: Climbing right turn to 3600 on ICT R-031 to CHATE/ICT 19.3 DME and hold, continue climb-in-hold to 3600.</p>
--	---

AWOS-3PT 123.875	WICHITA APP CON 125.5 306.2	CLNC DEL 126.55	UNICOM 123.0 (CTAF) 0
----------------------------	---------------------------------------	---------------------------	---------------------------------



NC-2, 03 DEC 2020 to 31 DEC 2020

NC-2, 03 DEC 2020 to 31 DEC 2020