

WAAS CH 70417 W17A	APP CRS 173°	Rwy Idg 6824 TDZE 2589 Apt Elev 2589
--	------------------------	---

RNAV (GPS) RWY 17
AINSWORTH RGNL (ANW)

RNP APCH.

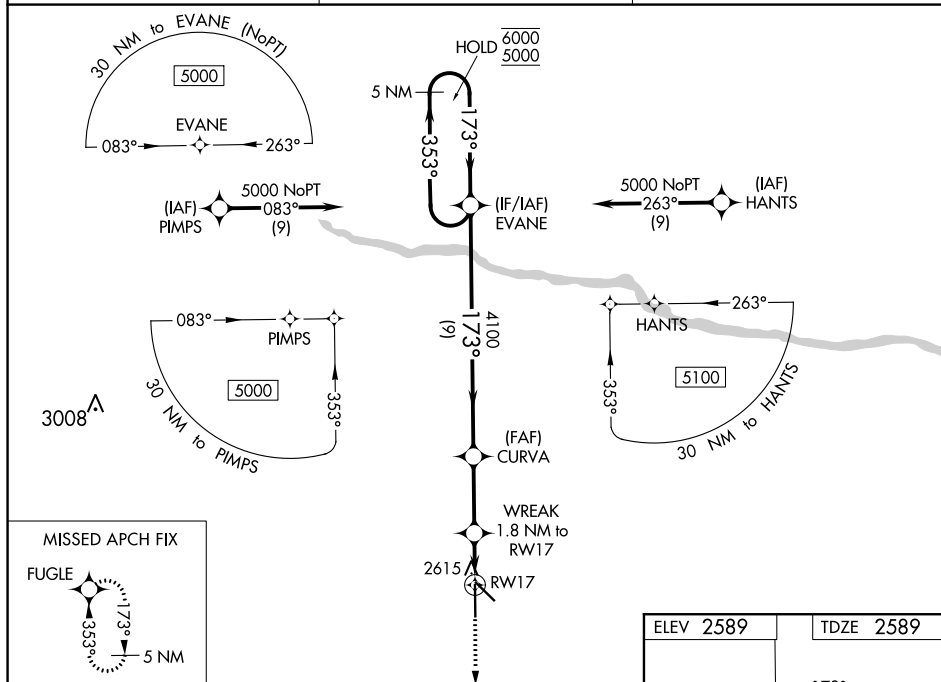
T For uncompensated Baro-VNAV systems, LNAV/VNAV NA below -20°C or above 54°C. For inop ALS, increase LNAV/VNAV all Cats visibility to $\frac{3}{4}$ SM, and LNAV Cats C/D visibility to $\frac{7}{8}$ SM.

MALSR



MISSED APPROACH: Climb to 5100 direct FUGLE and hold.

AWOS-3 118.325	DENVER CENTER 127.95 338.2	UNICOM 122.8 (CTAF) 0
--------------------------	--------------------------------------	--



NC-2, 03 DEC 2020 to 31 DEC 2020

NC-2, 03 DEC 2020 to 31 DEC 2020

5 NM Holding Pattern

EVANE

CURVA

WREAK 1.8 NM to RW17

*LNNAV only

5100

FUGLE

6000 ← 353°

5000 → 173°

173°

4100

*3220

GP 3.00° TCH 46

9 NM

2.8 NM

1.1 NM

0.7 NM

RW17

CATEGORY	A	B	C	D
LPV DA	2789-½	200 (200-½)		
LNNAV/VNAV DA	2839-½	250 (300-½)		
LNNAV MDA	2880-½	291 (300-½)		
C CIRCLING	3000-1 411 (500-1)	3040-1 451 (500-1)	3040-1½ 451 (500-1½)	3200-2 611 (700-2)

