

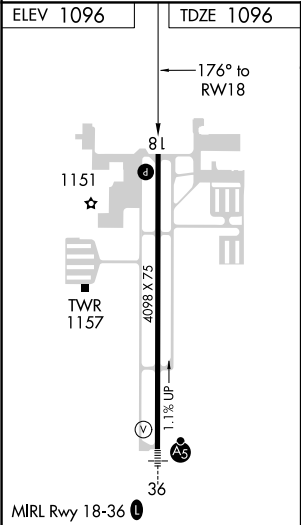
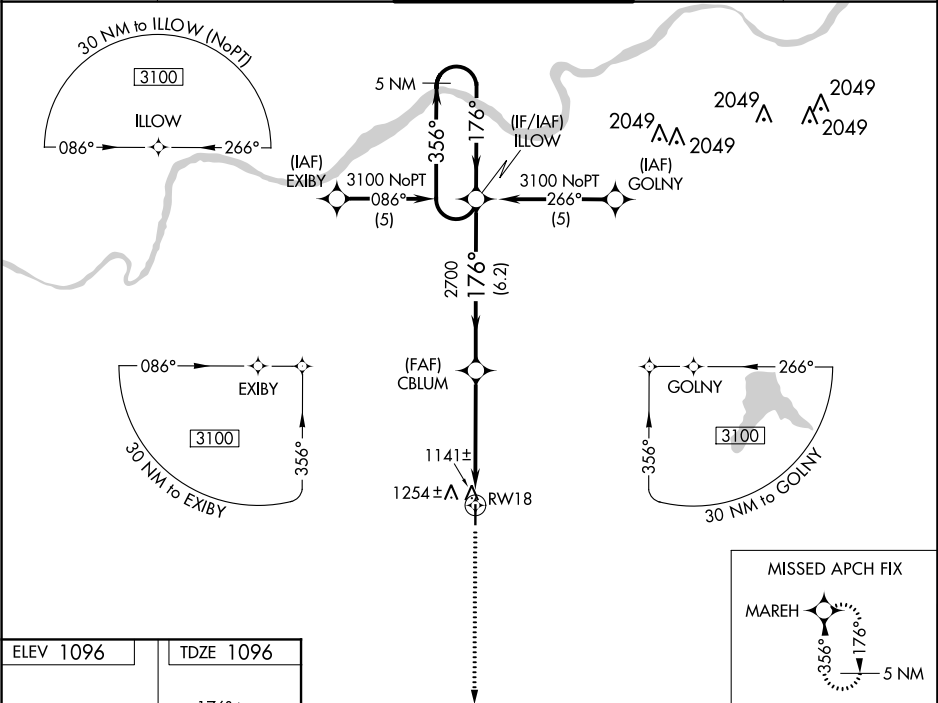
WAAS CH 53700 W18A	APP CRS 176°	Rwy Idg TDZE Apt Elev	4098 1096 1096
--	------------------------	-----------------------------	---

RNAV (GPS) RWY 18

JOHNSON COUNTY EXECUTIVE (OJC)

RNP APCH. ▼ For uncompensated Baro-VNAV systems, LNAV/VNAV NA below -17°C or above 54°C.	MISSED APPROACH: Climb to 3000 direct MAREH and hold.
---	---

ATIS 119.35	KANSAS CITY APP CON 118.9 251.075	EXECUTIVE TOWER* 126.0 (CTAF) 225.4	GND CON 121.6	UNICOM 122.95
-----------------------	---	---	-------------------------	-------------------------



3000

MAREH

ILLOW

5 NM Holding Pattern

CBLUM

3100

356°→

←176°

GP 3.00°
TCH 40

RW18

2700

4.8 NM

6.2 NM

CATEGORY	A	B	C	D
LPV DA	1346-1 250 (300-1)			NA
LNAV/VNAV DA	1527-1½ 431 (500-1½)			NA
LNAV MDA	1560-1	464 (500-1)	1560-1¼ 464 (500-1¼)	NA
CIRCLING	1620-1	524 (600-1)	1620-1½ 524 (600-1½)	NA