

VOR/DME SCB	APP CRS	Rwy Idg	4650
111.0	147°	TDZE	1204
Chan 47		Apt Elev	1204

VOR RWY 14

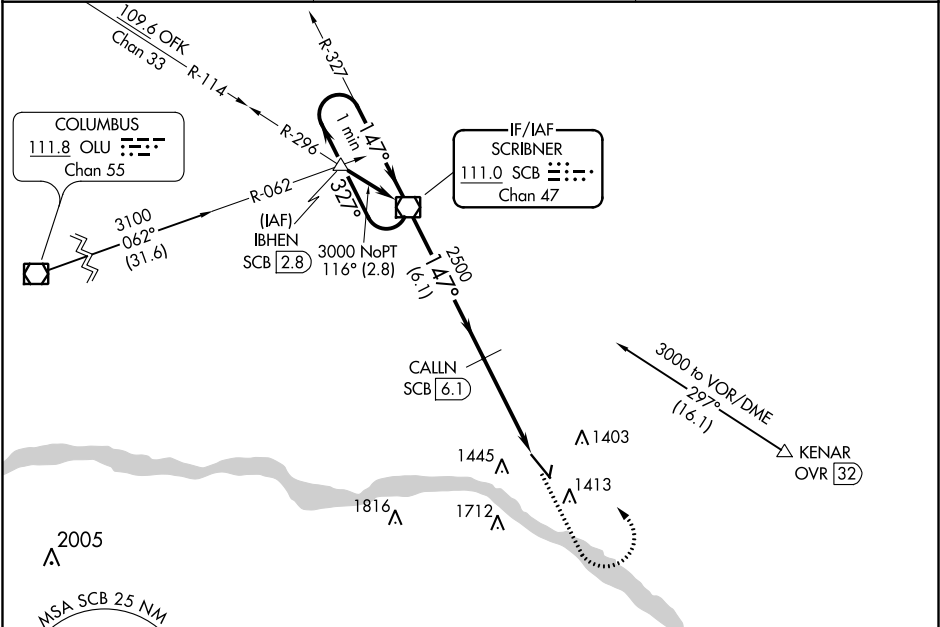
FREMONT MUNI (F'ET)

NA

VDP NA with Blair altimeter setting. Rwy 14 helicopter visibility reduction below 1 SM NA. When local altimeter setting not received, use Blair altimeter setting and increase all MDA 60 feet; increase S-14 Cat C visibility 1/8 mile. DME required.

MISSED APPROACH: Climb to 3000 then left turn direct SCB VOR/DME and hold.

AWOS-3 121.275	OMAHA APP CON 120.1 354.05	UNICOM 122.8 (CTAF) 0
-------------------	-------------------------------	--------------------------



One Minute Holding Pattern

3000 ← 327°
147° →

SCB VOR/DME

CALLN SCB (6.1)

3000

SCB (8.2)

SCB (10)

3000

2500

3.00° TCH 40

6.1 NM

2.1 NM

1.8 NM

ELEV 1204 D TDZE 1204

147° 4 NM from FAF

6353x100

1260

CATEGORY	A	B	C	D
S-14	1820-1	616 (700-1)	1820-1 3/4 616 (700-1 3/4)	NA
CIRCLING	1820-1	616 (700-1)	2020-2 1/2 816 (900-2 1/2)	NA

REIL Rwy 14 0

MIRL Rwy 14-32