

VOR/DME CUZ
108.2
Chan **19**

APP CRS
135°

Rwy Idg
TDZE
Apt Elev
4203
2546
2546

VOR RWY 14

BROKEN BOW MUNI/KEITH GLAZE FLD (BBW)

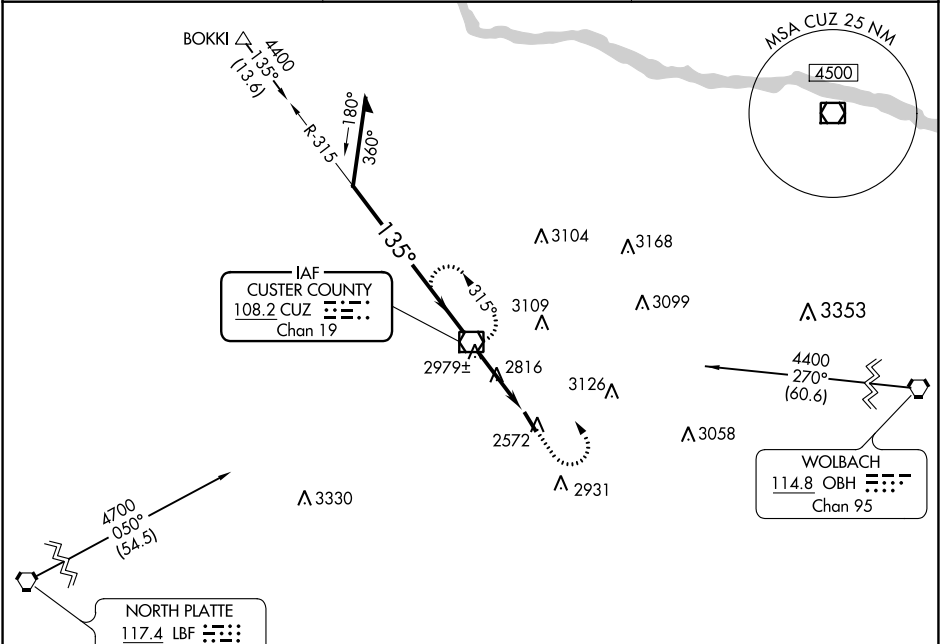
When local altimeter setting not received; use North Platte Rgnl altimeter setting. Rwy 14 helicopter visibility reduction below 3/4 SM NA.

MISSED APPROACH: Climb to 4400 then left turn direct CUZ VOR/DME and hold.

ASOS
120.0

DENVER CENTER
132.7 226.675

UNICOM
122.8 (CTAF) 0



ELEV 2546

TDZE 2546

4400

CUZ

135° 3.2 NM from FAF

4203 X.75

0.6 3% UP

Remain within 10 NM

CUZ VOR/DME

4400

315°

135°

3500

3.2 NM

CATEGORY	A	B	C	D
S-14	3240-1	694 (700-1)	NA	
CIRCLING	3280-1	734 (800-1)	NA	
NORTH PLATTE RGNL ALTIMETER SETTING MINIMUMS				
S-14	3380-1 834 (900-1)	3380-1¼ 834 (900-1¼)	NA	
CIRCLING	3440-1¼	894 (900-1¼)	NA	

REIL Rwy 14 0

MIRL Rwy 14-32 0

FAF to MAP 3.2 NM

Knots	60	90	120	150	180
Min:Sec	3:12	2:08	1:36	1:17	1:04