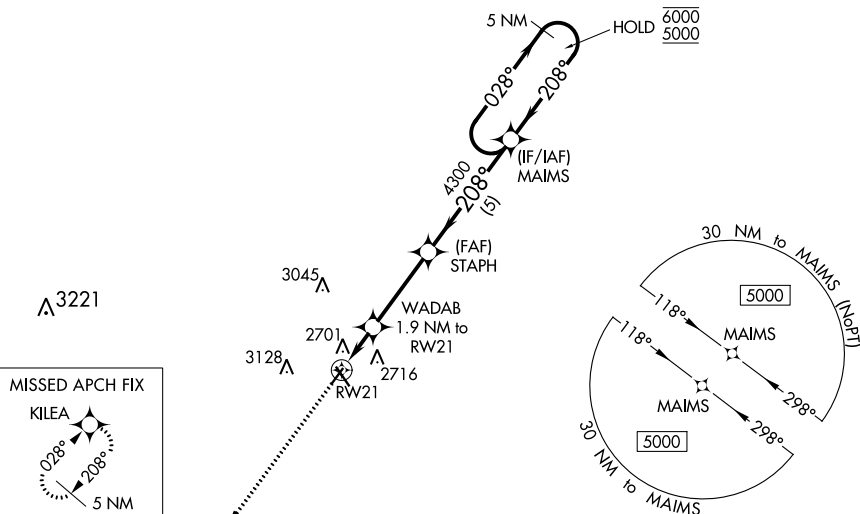


RNAV (GPS) RWY 21
MILLER FIELD (VTN)

 For uncompensated Baro-VNAV systems, LNAV/VNAV NA below -24°C or above 54°C.

MISSED APPROACH: Climb to 5000 direct KILEA and hold.

UNICOM
122.8 (CTAF) **L**

208° to
RW21

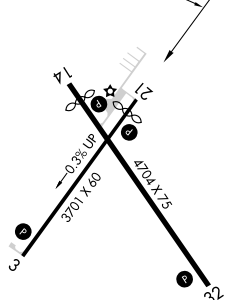


Diagram illustrating a 3D flight path with the following details:

- Waypoints and Distances:**
 - Start to RW21: 1.2 NM
 - RW21 to WADAB: 0.7 NM
 - WADAB to STAPH: 3.3 NM
 - STAPH to MAIMS: 5 NM
 - MAIMS to Holding Pattern: 5 NM
- Altitudes and Elevation:**
 - STAPH: 4300
 - MAIMS: 4300
 - GP 3.00°
 - TCH 45°
- Angles and Bearings:**
 - 028° (approach bearing)
 - 208° (departure bearing)
- Other Labels:**
 - 5000 (altitude)
 - KILEA (location)
 - * LNAV only
 - * 1.2 NM to RW21
 - 3220* (altitude)