

WAAS CH <b>90237</b> <b>W03A</b>	APP CRS <b>028°</b>	Rwy Idg <b>3701</b> TDZE <b>2595</b> Apt Elev <b>2595</b>
--	------------------------	---

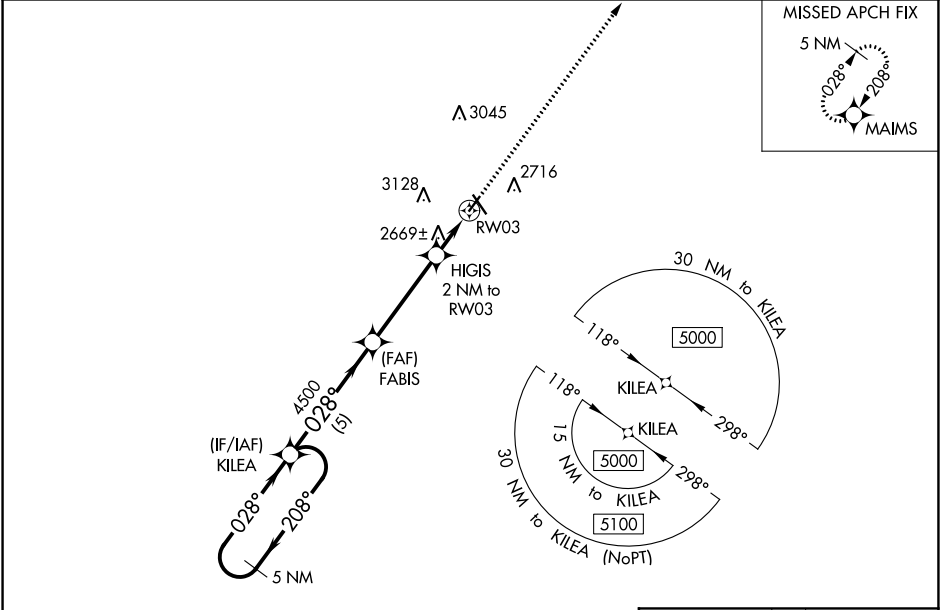
RNAV (GPS) RWY 3

MILLER FIELD (VTN)

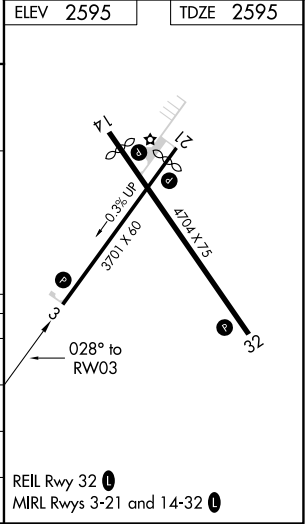
**⚠** Baro-VNAV NA when using Ainsworth Rgnl altimeter setting. For uncompensated Baro-VNAV systems, LNAV/VNAV NA below -25°C (-13°F) or above 54°C (130°F). DME/DME RNP-0.3 NA. VDP NA with Ainsworth Rgnl altimeter setting. When local altimeter setting not received, use Ainsworth Rgnl altimeter setting and increase all DA 70 feet and all MDA 80 feet, increase LNAV/VNAV Cat A/B visibility ½ mile.

MISSED APPROACH:  
Climb to 5000 direct  
MAIMS and hold.

ASOS <b>118.075</b>	DENVER CENTER <b>127.95 338.2</b>	UNICOM <b>122.8 (CTAF) 0</b>
------------------------	--------------------------------------	---------------------------------



GP 3.00° TCH 39		5000		4500		3260	
5 NM		3.9 NM		1.2 NM		0.8 NM	
CATEGORY		A	B	C	D		
LPV DA		2845-1	250 (300-1)	NA			
LNAV/VNAV DA		2845-1	250 (300-1)	NA			
LNAV MDA		2920-1	325 (400-1)	NA			
CIRCLING		3080-1 485 (500-1)	3560-1½ 965 (1000-1½)	NA			



NC-2, 03 DEC 2020 to 31 DEC 2020

NC-2, 03 DEC 2020 to 31 DEC 2020